

Anti-GPRASP2 antibody

Cat. No.	ml125166
Package	25 µl/100 µl/200 µl
Storage	-20°C, pH7.4 PBS, 0.05% NaN ₃ , 40% Glycerol

Product overview

Description	Anti-GPRASP2 rabbit polyclonal antibody
Applications	ELISA, IHC
Immunogen	Fusion protein of human GPRASP2
Reactivity	Human, Mouse
Content	1.32 mg/ml
Host species	Rabbit
Ig class	Immunogen-specific rabbit IgG
Purification	Antigen affinity purification

Target information

Symbol	GPRASP2
Full name	G protein-coupled receptor associated sorting protein 2
Synonyms	GASP2
Swissprot	Q96D09

Target Background

The protein encoded by this gene is a member of a family that regulates the activity of G protein-coupled receptors (GPCRs). The encoded protein has been shown to be capable of interacting with several GPCRs, including the M1 muscarinic acetylcholine receptor and the calcitonin receptor. Several transcript variants encoding the same protein have been found for this gene.

订购热线: 4008-898-798

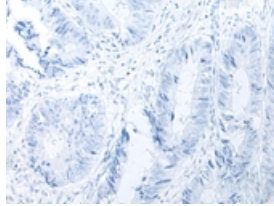
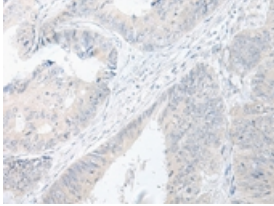
Applications

Immunohistochemistry

Predicted cell location: Cytoplasm

Positive control: Human colorectal cancer

Recommended dilution: 50-300

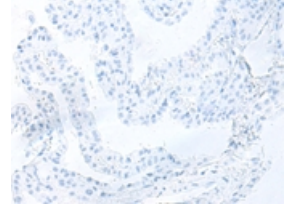
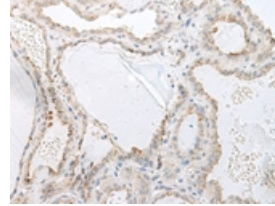


The image on the left is immunohistochemistry of paraffin-embedded Human colorectal cancer tissue using ml125166(GPRASP2 Antibody) at dilution 1/75, on the right is treated with fusion protein. (Original magnification: ×200)

Predicted cell location: Cytoplasm

Positive control: Human thyroid cancer

Recommended dilution: 50-300



The image on the left is immunohistochemistry of paraffin-embedded Human thyroid cancer tissue using ml125166(GPRASP2 Antibody) at dilution 1/75, on the right is treated with fusion protein. (Original magnification: ×200)

ELISA

Recommended dilution: 5000-10000

联系电话: 4008-898-798, 021-61725725

联系QQ: 2881505695, 2881505696

邮箱: mlbio_cn@yeah.net

网址: www.mlbio.cn