

Anti-PFDN2 antibody

Cat. No.	ml125591
Package	25 µl/100 µl/200 µl
Storage	-20°C, pH7.4 PBS, 0.05% NaN ₃ , 40% Glycerol

Product overview

Description	Anti-PFDN2 rabbit polyclonal antibody
Applications	ELISA, IHC
Immunogen	Fusion protein of human PFDN2
Reactivity	Human, Mouse, Rat
Content	0.66 mg/ml
Host species	Rabbit
Ig class	Immunogen-specific rabbit IgG
Purification	Antigen affinity purification

Target information

Symbol	PFDN2
Full name	prefoldin subunit 2
Synonyms	PFD2
Swissprot	Q9UHV9

Target Background

This gene encodes a member of the prefoldin beta subunit family. The encoded protein is one of six subunits of prefoldin, a molecular chaperone complex that binds and stabilizes newly synthesized polypeptides, thereby allowing them to fold correctly. The complex, consisting of two alpha and four beta subunits, forms a double beta barrel assembly with six protruding coiled-coils.

订购热线: 4008-898-798

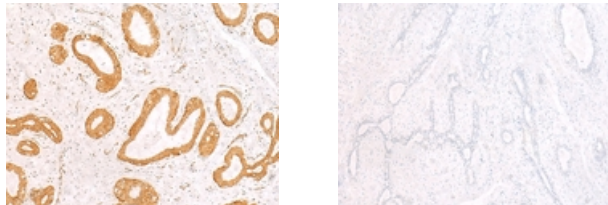
Applications

Immunohistochemistry

Predicted cell location: Cytoplasm and Nucleus

Positive control: Human breast cancer

Recommended dilution: 25-100



The image on the left is immunohistochemistry of paraffin-embedded Human breast cancer tissue using ml125591(PFDN2 Antibody) at dilution 1/25, on the right is treated with fusion protein. (Original magnification: $\times 200$)

ELISA

Recommended dilution: 5000-10000

联系电话: 4008-898-798, 021-61725725

联系QQ: 2881505695, 2881505696

邮箱: mlbio_cn@yeah.net

网址: www.mlbio.cn