

Anti-ZNF268 antibody

Cat. No.	ml223612
Package	25 µl/100 µl/200 µl
Storage	-20°C, pH7.4 PBS, 0.05% NaN ₃ , 40% Glycerol

Product overview

Description	Anti-ZNF268 rabbit polyclonal antibody
Applications	ELISA, IHC
Immunogen	Fusion protein of human ZNF268
Reactivity	Human
Content	1.6 mg/ml
Host species	Rabbit
Ig class	Immunogen-specific rabbit IgG
Purification	Antigen affinity purification

Target information

Symbol	ZNF268
Full name	zinc finger protein 268
Synonyms	HZF3
Swissprot	Q14587

Target Background

Zinc-finger proteins contain DNA-binding domains and have a wide variety of functions, most of which encompass some form of transcriptional activation or repression. The majority of zinc-finger proteins contain a krueppel-type DNA binding domain and a KRAB domain, which is thought to interact with KAP1, thereby recruiting histone modifying proteins. Zinc finger protein 268 (ZNF268), also known as zinc finger protein 3 or HZF3, is a 947 amino acid protein belonging to the krueppel C2H2-type zinc-finger protein family. ZNF268 contains 24 C2H2-type zinc fingers and one KRAB domain. Localized to the nucleus, ZNF268 is involved in transcriptional regulation and is highly expressed in three to five week old embryos. ZNF268 has been implicated in human leukemia, due to the identification of an alternatively spliced form in leukemia patients. Two named isoforms of ZNF268 exist as a result of alternative splicing events.

订购热线: 4008-898-798

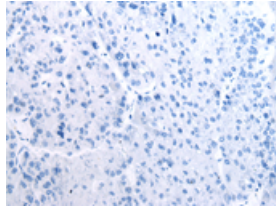
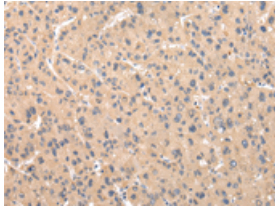
Applications

Immunohistochemistry

Predicted cell location: Cytoplasm

Positive control: Human liver cancer

Recommended dilution: 40-250



The image on the left is immunohistochemistry of paraffin-embedded Human liver cancer tissue using ml223612(ZNF268 Antibody) at dilution 1/50, on the right is treated with fusion protein. (Original magnification: $\times 200$)

ELISA

Recommended dilution: 2000-10000

联系电话: 4008-898-798, 021-61725725

联系QQ: 2881505695, 2881505696

邮箱: mlbio_cn@yeah.net

网址: www.mlbio.cn