

Anti-LSAMP antibody

Cat. No.	ml223848
Package	25 µl/100 µl/200 µl
Storage	-20°C, pH7.4 PBS, 0.05% NaN ₃ , 40% Glycerol

Product overview

Description	Anti-LSAMP rabbit polyclonal antibody
Applications	ELISA, IHC
Immunogen	Fusion protein of human LSAMP
Reactivity	Human, Mouse, Rat
Content	0.5 mg/ml
Host species	Rabbit
Ig class	Immunogen-specific rabbit IgG
Purification	Antigen affinity purification

Target information

Symbol	LSAMP
Full name	limbic system-associated membrane protein
Synonyms	LAMP; IGLON3
Swissprot	Q13449

Target Background

The protein encoded by this gene is a neuronal surface glycoprotein found in cortical and subcortical regions of the limbic system. During development of the limbic system, this encoded protein is found on the surface of axonal membranes and growth cones, where it acts as a selective homophilic adhesion molecule, and guides the development of specific patterns of neuronal connections.

订购热线: 4008-898-798

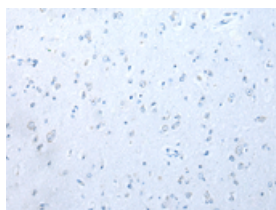
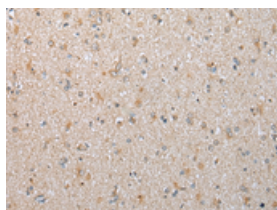
Applications

Immunohistochemistry

Predicted cell location: Cell membrane

Positive control: Human brain

Recommended dilution: 20-100



The image on the left is immunohistochemistry of paraffin-embedded Human brain tissue using ml223848(LSAMP Antibody) at dilution 1/25, on the right is treated with fusion protein. (Original magnification: $\times 200$)

ELISA

Recommended dilution: 5000-10000

联系电话: 4008-898-798, 021-61725725

联系QQ: 2881505695, 2881505696

邮箱: mlbio_cn@yeah.net

网址: www.mlbio.cn