

Anti-CPNE6 antibody

Cat. No.	ml224663
Package	25 µl/100 µl/200 µl
Storage	-20°C, pH7.4 PBS, 0.05% NaN ₃ , 40% Glycerol

Product overview

Description	Anti-CPNE6 rabbit polyclonal antibody
Applications	ELISA, IHC
Immunogen	Fusion protein of human CPNE6
Reactivity	Human, Mouse
Content	0.7 mg/ml
Host species	Rabbit
Ig class	Immunogen-specific rabbit IgG
Purification	Antigen affinity purification

Target information

Symbol	CPNE6
Full name	copine 6
Synonyms	
Swissprot	O95741

Target Background

This gene encodes a member of the copine family. Members of this family are calcium-dependent, phospholipid-binding proteins with C2 domains, two calcium- and phospholipid-binding domains. Through their domain structure and lipid binding capabilities, these proteins may play a role in membrane trafficking. This protein is thought to be brain-specific and has a domain structure of two N-terminal C2 domains and one von Willebrand factor A domain. It may have a role in synaptic plasticity.

订购热线: 4008-898-798

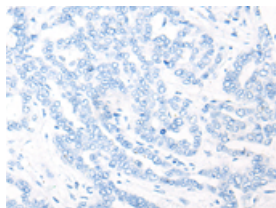
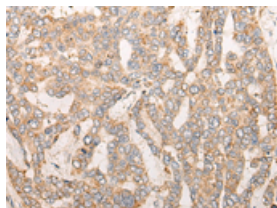
Applications

Immunohistochemistry

Predicted cell location: Cytoplasm or Cell membrane

Positive control: Human liver cancer

Recommended dilution: 25-100

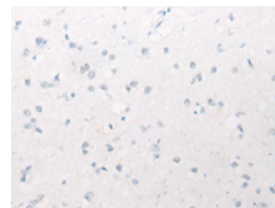
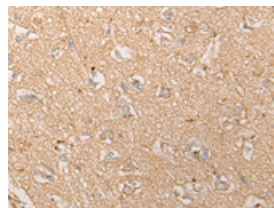


The image on the left is immunohistochemistry of paraffin-embedded Human liver cancer tissue using ml224663(CPNE6 Antibody) at dilution 1/30, on the right is treated with fusion protein. (Original magnification: $\times 200$)

Predicted cell location: Cytoplasm or Cell membrane

Positive control: Human brain

Recommended dilution: 25-100



The image on the left is immunohistochemistry of paraffin-embedded Human brain tissue using ml224663(CPNE6 Antibody) at dilution 1/30, on the right is treated with fusion protein. (Original magnification: $\times 200$)

ELISA

Recommended dilution: 5000-10000

联系电话: 4008-898-798, 021-61725725

联系QQ: 2881505695, 2881505696

邮箱: mlbio_cn@yeah.net

网址: www.mlbio.cn