

Anti-RADIL antibody

| | |
|-----------------|---|
| Cat. No. | ml224897 |
| Package | 25 µl/100 µl/200 µl |
| Storage | -20°C, pH7.4 PBS, 0.05% NaN ₃ , 40% Glycerol |

Product overview

| | |
|---------------------|---------------------------------------|
| Description | Anti-RADIL rabbit polyclonal antibody |
| Applications | ELISA, IHC |
| Immunogen | Fusion protein of human RADIL |
| Reactivity | Human |
| Content | 1.44 mg/ml |
| Host species | Rabbit |
| Ig class | Immunogen-specific rabbit IgG |
| Purification | Antigen affinity purification |

Target information

| | |
|------------------|---------------------------------|
| Symbol | RADIL |
| Full name | Rap associating with DIL domain |
| Synonyms | RASIP2 |
| Swissprot | Q96JH8 |

Target Background

Downstream effector of Rap required for cell adhesion and migration of neural crest precursors during development.

订购热线: 4008-898-798

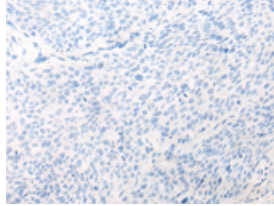
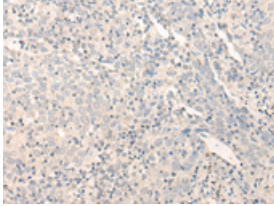
Applications

Immunohistochemistry

Predicted cell location: Cytoplasm

Positive control: Human cervical cancer

Recommended dilution: 40-200

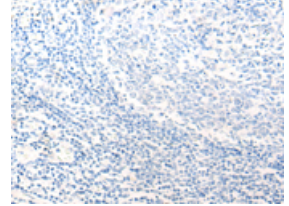
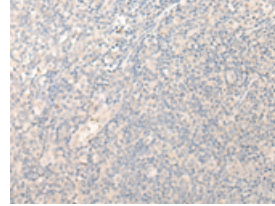


The image on the left is immunohistochemistry of paraffin-embedded Human cervical cancer tissue using ml224897(RADIL Antibody) at dilution 1/40, on the right is treated with fusion protein. (Original magnification: $\times 200$)

Predicted cell location: Cytoplasm

Positive control: Human tonsil

Recommended dilution: 40-200



The image on the left is immunohistochemistry of paraffin-embedded Human tonsil tissue using ml224897(RADIL Antibody) at dilution 1/40, on the right is treated with fusion protein. (Original magnification: $\times 200$)

ELISA

Recommended dilution: 5000-10000

联系电话: 4008-898-798, 021-61725725

联系QQ: 2881505695, 2881505696

邮箱: mlbio_cn@yeah.net

网址: www.mlbio.cn