

Anti-FOXB2 antibody

| | |
|-----------------|---|
| Cat. No. | ml260346 |
| Package | 25 µl/100 µl/200 µl |
| Storage | -20°C, pH7.4 PBS, 0.05% NaN ₃ , 40% Glycerol |

Product overview

| | |
|---------------------|---------------------------------------|
| Description | Anti-FOXB2 rabbit polyclonal antibody |
| Applications | ELISA, IHC |
| Immunogen | Synthetic peptide of human FOXB2 |
| Reactivity | Human |
| Content | 0.4 mg/ml |
| Host species | Rabbit |
| Ig class | Immunogen-specific rabbit IgG |
| Purification | Antigen affinity purification |

Target information

| | |
|------------------|-----------------|
| Symbol | FOXB2 |
| Full name | Forkhead box B2 |
| Synonyms | bA159H20.4 |
| Swissprot | Q5VYV0 |

Target Background

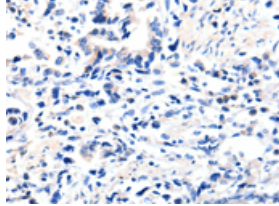
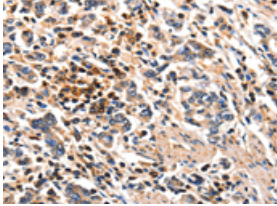
FOX (Forkhead box) proteins are a family of transcription factors that play important roles in regulating the expression of genes involved in cell growth, proliferation, differentiation, and longevity. Many FOX proteins are important to embryonic development. The defining feature of FOX proteins is the forkhead box, a sequence of 80 to 100 amino acids forming a motif that binds to DNA. This forkhead motif is also known as the winged helix due to the butterfly-like appearance of the loops in the protein structure of the domain. Forkhead genes are a subgroup of the helix-turn-helix class of proteins. The FOXF2 gene encodes forkhead box F2, one of many human homologues of the *Drosophila melanogaster* transcription factor forkhead. FOXF2 is expressed in lung and placenta.

订购热线: 4008-898-798

Applications

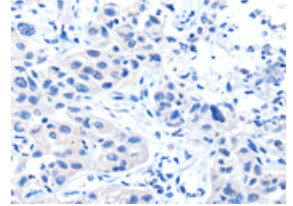
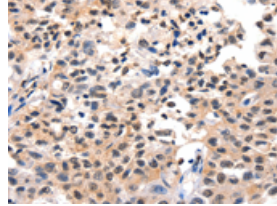
Immunohistochemistry

Predicted cell location: Cytoplasm, Nucleus
Positive control: Human gasrtic cancer
Recommended dilution: 10-50



The image on the left is immunohistochemistry of paraffin-embedded Human gasrtic cancer tissue using ml260346(FOXB2 Antibody) at dilution 1/5, on the right is treated with synthetic peptide. (Original magnification: ×200)

Predicted cell location: Cytoplasm, Nucleus
Positive control: Human lung cancer
Recommended dilution: 10-50



The image on the left is immunohistochemistry of paraffin-embedded Human lung cancer tissue using ml260346(FOXB2 Antibody) at dilution 1/5, on the right is treated with synthetic peptide. (Original magnification: ×200)

ELISA

Recommended dilution: 1000-2000

联系电话: 4008-898-798, 021-61725725

联系QQ: 2881505695, 2881505696

邮箱: mlbio_cn@yeah.net

网址: www.mlbio.cn