

Anti-PDIA2 antibody

Cat. No.	ml261080
Package	25 µl/100 µl/200 µl
Storage	-20°C, pH7.4 PBS, 0.05% NaN ₃ , 40% Glycerol

Product overview

Description	Anti-PDIA2 rabbit polyclonal antibody
Applications	ELISA, IHC
Immunogen	Synthetic peptide of human PDIA2
Reactivity	Human
Content	0.7 mg/ml
Host species	Rabbit
Ig class	Immunogen-specific rabbit IgG
Purification	Antigen affinity purification

Target information

Symbol	PDIA2
Full name	Protein disulfide isomerase family A, member 2
Synonyms	PDI, PDA2, PDIP, PDIR
Swissprot	Q13087

Target Background

Protein disulfide isomerases (EC 5.3.4.1), such as PDIP, are endoplasmic reticulum (ER) resident proteins that catalyze protein folding and thiol-disulfide interchange reactions

订购热线: 4008-898-798

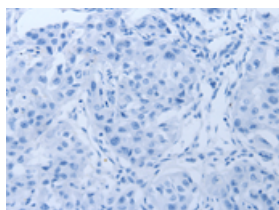
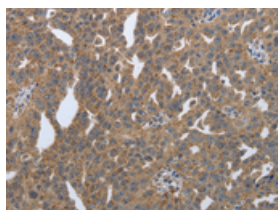
Applications

Immunohistochemistry

Predicted cell location: Cytoplasm

Positive control: Human ovarian cancer

Recommended dilution: 50-200

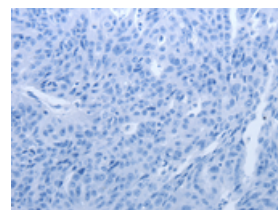
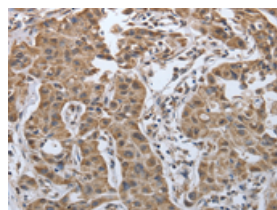


The image on the left is immunohistochemistry of paraffin-embedded Human ovarian cancer tissue using ml261080(PDIA2 Antibody) at dilution 1/50, on the right is treated with synthetic peptide. (Original magnification: $\times 200$)

Predicted cell location: Cytoplasm

Positive control: Human lung cancer

Recommended dilution: 50-200



The image on the left is immunohistochemistry of paraffin-embedded Human lung cancer tissue using ml261080(PDIA2 Antibody) at dilution 1/50, on the right is treated with synthetic peptide. (Original magnification: $\times 200$)

ELISA

Recommended dilution: 2000-10000

联系电话: 4008-898-798, 021-61725725

联系QQ: 2881505695, 2881505696

邮箱: mlbio_cn@yeah.net

网址: www.mlbio.cn