

Anti-CABLES2 antibody

Cat. No.	ml261496
Package	25 µl/100 µl/200 µl
Storage	-20°C, pH7.4 PBS, 0.05% NaN ₃ , 40% Glycerol

Product overview

Description	Anti-CABLES2 rabbit polyclonal antibody
Applications	ELISA, IHC
Immunogen	Synthetic peptide of human CABLES2
Reactivity	Human, Mouse
Content	0.3 mg/ml
Host species	Rabbit
Ig class	Immunogen-specific rabbit IgG
Purification	Antigen affinity purification

Target information

Symbol	CABLES2
Full name	Cdk5 and Abl enzyme substrate 2
Synonyms	ik3-2; C20orf150; dJ908M14.2
Swissprot	Q9BTV7

Target Background

Cables2 (Cdk5 and ABL1 enzyme substrate 2), also known as Ik3-2, is a 478 amino acid ubiquitously expressed protein that has a C-terminal cyclin box-containing domain, making it a member of the cyclin protein superfamily. A related protein, Cables, forms a trimolecular complex with Cdk5 and c-Abl in vivo, enhances apoptosis induced by overexpression of p53 and may be a tumor suppressor, due to its chromosomal loss of heterozygosity that is found in certain cancers. Cables2 shares 78% sequence similarity with Cables in the region of the cyclin box-containing domain and, in similar functionality, associates with Cdk3, Cdk5 and c-Abl. However, unlike its close relative, Cables2 also contains an N-terminal region that enhances not only p53-mediated cell death, but also p53-independent cell death. This characteristic suggests that the gene encoding Cables2 may also function as a tumor suppressor gene.

订购热线: 4008-898-798

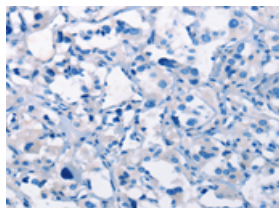
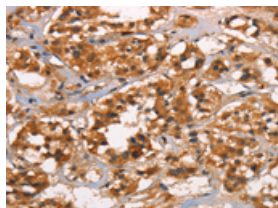
Applications

Immunohistochemistry

Predicted cell location: Cytoplasm

Positive control: Human thyroid cancer

Recommended dilution: 25-100

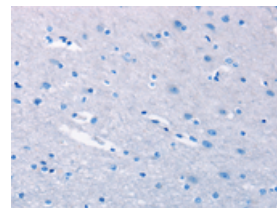
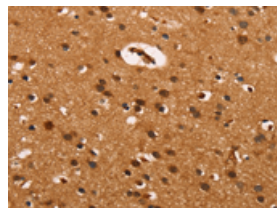


The image on the left is immunohistochemistry of paraffin-embedded Human thyroid cancer tissue using ml261496(CABLES2 Antibody) at dilution 1/25, on the right is treated with synthetic peptide. (Original magnification: $\times 200$)

Predicted cell location: Cytoplasm

Positive control: Human brain

Recommended dilution: 25-100



The image on the left is immunohistochemistry of paraffin-embedded Human brain tissue using ml261496(CABLES2 Antibody) at dilution 1/25, on the right is treated with synthetic peptide. (Original magnification: $\times 200$)

ELISA

Recommended dilution: 1000-2000

联系电话: 4008-898-798, 021-61725725

联系QQ: 2881505695, 2881505696

邮箱: mlbio_cn@yeah.net

网址: www.mlbio.cn