

## Anti-TP53AIP1 antibody

|                 |                                                         |
|-----------------|---------------------------------------------------------|
| <b>Cat. No.</b> | ml262005                                                |
| <b>Package</b>  | 25 µl/100 µl/200 µl                                     |
| <b>Storage</b>  | -20°C, pH7.4 PBS, 0.05% NaN <sub>3</sub> , 40% Glycerol |

### Product overview

|                     |                                          |
|---------------------|------------------------------------------|
| <b>Description</b>  | Anti-TP53AIP1 rabbit polyclonal antibody |
| <b>Applications</b> | ELISA, IHC                               |
| <b>Immunogen</b>    | Synthetic peptide of human TP53AIP1      |
| <b>Reactivity</b>   | Human                                    |
| <b>Content</b>      | 0.8 mg/ml                                |
| <b>Host species</b> | Rabbit                                   |
| <b>Ig class</b>     | Immunogen-specific rabbit IgG            |
| <b>Purification</b> | Antigen affinity purification            |

### Target information

|                  |                                                          |
|------------------|----------------------------------------------------------|
| <b>Symbol</b>    | TP53AIP1                                                 |
| <b>Full name</b> | tumor protein p53 regulated apoptosis inducing protein 1 |
| <b>Synonyms</b>  | P53AIP1                                                  |
| <b>Swissprot</b> | Q9HCN2                                                   |

### Target Background

This gene is specifically expressed in the thymus, and encodes a protein that is localized to the mitochondrion. The expression of this gene is inducible by p53, and it is thought to play an important role in mediating p53-dependent apoptosis. Alternatively spliced transcript variants encoding different isoforms have been described for this gene.

订购热线: 4008-898-798

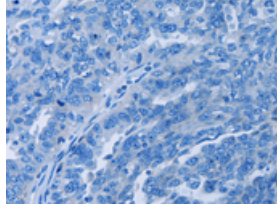
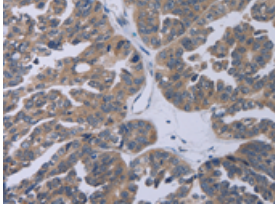
### Applications

#### Immunohistochemistry

Predicted cell location: Cytoplasm

Positive control: Human ovarian cancer

Recommended dilution: 50-200

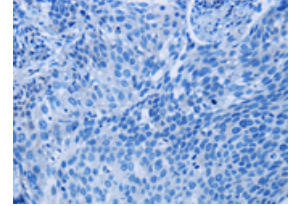
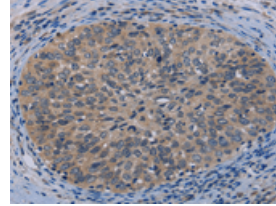


The image on the left is immunohistochemistry of paraffin-embedded Human ovarian cancer tissue using ml262005(TP53AIP1 Antibody) at dilution 1/50, on the right is treated with synthetic peptide. (Original magnification:  $\times 200$ )

Predicted cell location: Cytoplasm

Positive control: Human cervical cancer

Recommended dilution: 50-200



The image on the left is immunohistochemistry of paraffin-embedded Human cervical cancer tissue using ml262005(TP53AIP1 Antibody) at dilution 1/50, on the right is treated with synthetic peptide. (Original magnification:  $\times 200$ )

#### ELISA

Recommended dilution: 2000-5000

联系电话: 4008-898-798, 021-61725725

联系QQ: 2881505695, 2881505696

邮箱: mlbio\_cn@yeah.net

网址: www.mlbio.cn