

## Anti-CWC27 antibody

<b>Cat. No.</b>	ml262173
<b>Package</b>	25 µl/100 µl/200 µl
<b>Storage</b>	-20°C, pH7.4 PBS, 0.05% NaN <sub>3</sub> , 40% Glycerol

### Product overview

<b>Description</b>	Anti-CWC27 rabbit polyclonal antibody
<b>Applications</b>	ELISA, IHC
<b>Immunogen</b>	Synthetic peptide of human CWC27
<b>Reactivity</b>	Human, Mouse, Rat
<b>Content</b>	0.3 mg/ml
<b>Host species</b>	Rabbit
<b>Ig class</b>	Immunogen-specific rabbit IgG
<b>Purification</b>	Antigen affinity purification

### Target information

<b>Symbol</b>	CWC27
<b>Full name</b>	CWC27 spliceosome-associated protein homolog (S. cerevisiae)
<b>Synonyms</b>	NY-CO-10; SDCCAG10
<b>Swissprot</b>	Q6UX04

### Target Background

CWC27 belongs to the cyclophilin-type PPIase family and contains 1 PPIase cyclophilin-type domain. There are two isoforms. PPIases accelerate the folding of proteins.

订购热线: 4008-898-798

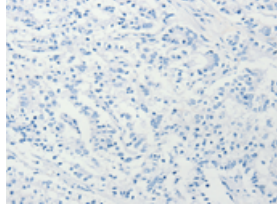
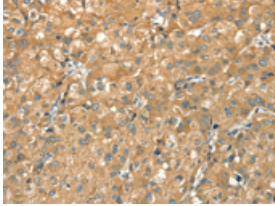
#### Applications

##### Immunohistochemistry

Predicted cell location: Cytoplasm

Positive control: Human liver cancer

Recommended dilution: 25-100



The image on the left is immunohistochemistry of paraffin-embedded Human liver cancer tissue using ml262173(CWC27 Antibody) at dilution 1/20, on the right is treated with synthetic peptide. (Original magnification: ×200)

##### ELISA

Recommended dilution: 1000-2000

联系电话: 4008-898-798, 021-61725725

联系QQ: 2881505695, 2881505696

邮箱: [mlbio\\_cn@yeah.net](mailto:mlbio_cn@yeah.net)

网址: [www.mlbio.cn](http://www.mlbio.cn)