

Anti-SLIT3 antibody

Cat. No.	ml262268
Package	25 µl/100 µl/200 µl
Storage	-20°C, pH7.4 PBS, 0.05% NaN ₃ , 40% Glycerol

Product overview

Description	Anti-SLIT3 rabbit polyclonal antibody
Applications	ELISA, IHC
Immunogen	Synthetic peptide of human SLIT3
Reactivity	Human, Mouse, Rat
Content	0.5 mg/ml
Host species	Rabbit
Ig class	Immunogen-specific rabbit IgG
Purification	Antigen affinity purification

Target information

Symbol	SLIT3
Full name	slit homolog 3 (Drosophila)
Synonyms	MEGF5; SLIL2; SLIT1; slit2; Slit-3
Swissprot	O75094

Target Background

The protein encoded by this gene is secreted, likely interacting with roundabout homolog receptors to effect cell migration. Two transcript variants encoding different isoforms have been found for this gene.

订购热线: 4008-898-798

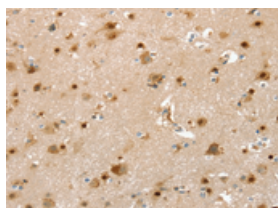
Applications

Immunohistochemistry

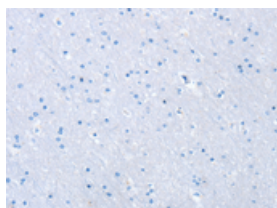
Predicted cell location: Cytoplasm

Positive control: Human brain

Recommended dilution: 25-100



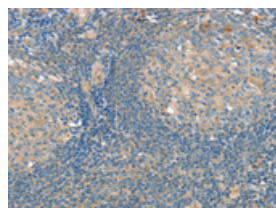
The image on the left is immunohistochemistry of paraffin-embedded Human brain tissue using ml262268(SLIT3 Antibody) at dilution 1/30, on the right is treated with synthetic peptide. (Original magnification: $\times 200$)



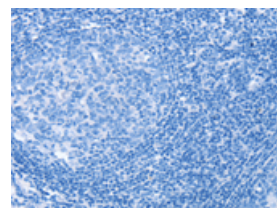
Predicted cell location: Cytoplasm

Positive control: Human tonsil

Recommended dilution: 25-100



The image on the left is immunohistochemistry of paraffin-embedded Human tonsil tissue using ml262268(SLIT3 Antibody) at dilution 1/30, on the right is treated with synthetic peptide. (Original magnification: $\times 200$)



ELISA

Recommended dilution: 1000-2000

联系电话: 4008-898-798, 021-61725725

联系QQ: 2881505695, 2881505696

邮箱: mlbio_cn@yeah.net

网址: www.mlbio.cn