

Anti-PAPPA-AS1 antibody

Cat. No.	ml263127
Package	25 µl/100 µl/200 µl
Storage	-20°C, pH7.4 PBS, 0.05% NaN ₃ , 40% Glycerol

Product overview

Description	Anti-PAPPA-AS1 rabbit polyclonal antibody
Applications	ELISA, IHC
Immunogen	Synthetic peptide of human PAPPA-AS1
Reactivity	Human
Content	0.7 mg/ml
Host species	Rabbit
Ig class	Immunogen-specific rabbit IgG
Purification	Antigen affinity purification

Target information

Symbol	PAPPA-AS1
Full name	PAPPA antisense RNA 1
Synonyms	DIPAS; TAF4B; PAPPAS; TAF2C2; PAPPAAS; PAPPA-AS; TAFII105; NCRNA00156
Swissprot	Q5QFB9

Target Background

PAPP A was originally isolated from pregnancy serum as heterotetrameric protein complex with molecular weight approximately 500 kDa, consisting of two PAPP A subunits disulfide-linked with two subunits of the proform of eosinophil major basic protein (proMBP). In such a complex proMBP functions as an inhibitor of PAPP A proteinase activity. PAPP A is widely used as a marker of some pathologies during pregnancy. Reduced level of PAPP A in pregnancy blood in the first trimester is associated with fetal Down syndrome. PAPP A is considered as one of the best biochemical markers in early pregnancy used to screen for Down syndrome during the first trimester (Wald, N. J. et al).

订购热线: 4008-898-798

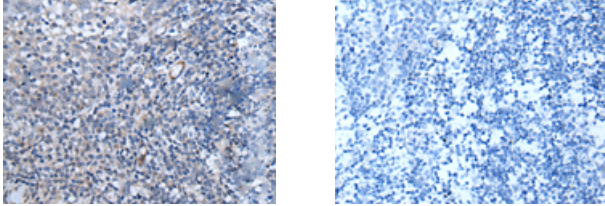
Applications

Immunohistochemistry

Predicted cell location: Cell membrane

Positive control: Human tonsil

Recommended dilution: 20-100



The image on the left is immunohistochemistry of paraffin-embedded Human tonsil tissue using ml263127(PAPPA-AS1 Antibody) at dilution 1/35, on the right is treated with synthetic peptide. (Original magnification: $\times 200$)

ELISA

Recommended dilution: 5000-10000

联系电话: 4008-898-798, 021-61725725

联系QQ: 2881505695, 2881505696

邮箱: mlbio_cn@yeah.net

网址: www.mlbio.cn