

Anti-BICRA antibody

Cat. No. ml263997
Package 25 µl/100 µl/200 µl
Storage -20°C, pH7.4 PBS, 0.05% NaN₃, 40% Glycerol

Product overview

Description Anti-BICRA rabbit polyclonal antibody
Applications ELISA, IHC
Immunogen Synthetic peptide of human BICRA
Reactivity Human
Content 1.68 mg/ml
Host species Rabbit
Ig class Immunogen-specific rabbit IgG
Purification Antigen affinity purification

Target information

Symbol BICRA
Full name BRD4 interacting chromatin remodeling complex associated protein
Synonyms GLTSCR1
Swissprot Q9NZM4

Target Background

May play a role in BRD4-mediated gene transcription.

订购热线: 4008-898-798

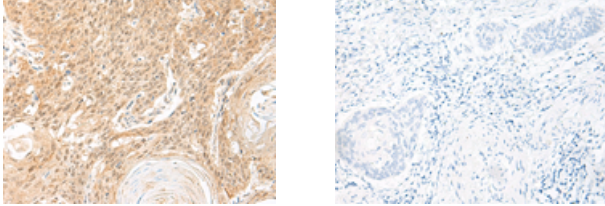
Applications

Immunohistochemistry

Predicted cell location: Nucleus

Positive control: Human esophagus cancer

Recommended dilution: 50-300



The image on the left is immunohistochemistry of paraffin-embedded Human esophagus cancer tissue using ml263997(BICRA Antibody) at dilution 1/60, on the right is treated with synthetic peptide. (Original magnification: $\times 200$)

ELISA

Recommended dilution: 5000-10000

联系电话: 4008-898-798, 021-61725725

联系QQ: 2881505695, 2881505696

邮箱: mlbio_cn@yeah.net

网址: www.mlbio.cn