

Anti-LGALS2 antibody

Cat. No.	ml120663
Package	25 µl/100 µl/200 µl
Storage	-20°C, pH7.4 PBS, 0.05% NaN ₃ , 40% Glycerol

Product overview

Description	Anti-LGALS2 rabbit polyclonal antibody
Applications	ELISA, WB, IHC
Immunogen	Fusion protein of human LGALS2
Reactivity	Human, Mouse
Content	0.7 mg/ml
Host species	Rabbit
Ig class	Immunogen-specific rabbit IgG
Purification	Antigen affinity purification

Target information

Symbol	LGALS2
Full name	ectin, galactoside-binding, soluble, 2
Synonyms	HL14
Swissprot	P05162

Target Background

The protein encoded by this gene is a soluble beta-galactoside binding lectin. The encoded protein is found as a homodimer and can bind to lymphotoxin-alpha. A single nucleotide polymorphism in an intron of this gene can alter the transcriptional level of the protein, with a resultant increased risk of myocardial infarction. This protein binds beta-galactoside. Its physiological function is not yet known.

订购热线: 4008-898-798

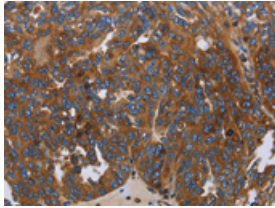
Applications

Immunohistochemistry

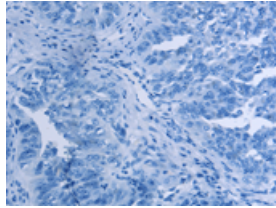
Predicted cell location: Cytoplasm

Positive control: Human ovarian cancer

Recommended dilution: 50-200



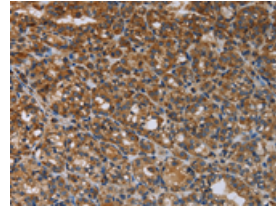
The image on the left is immunohistochemistry of paraffin-embedded Human ovarian cancer tissue using ml120663(LGALS2 Antibody) at dilution 1/30, on the right is treated with fusion protein. (Original magnification: $\times 200$)



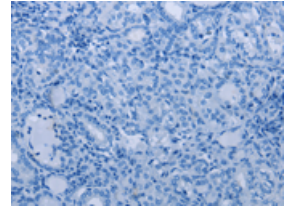
Predicted cell location: Cytoplasm

Positive control: Human thyroid cancer

Recommended dilution: 50-200



The image on the left is immunohistochemistry of paraffin-embedded Human thyroid cancer tissue using ml120663(LGALS2 Antibody) at dilution 1/30, on the right is treated with fusion protein. (Original magnification: $\times 200$)



Western blotting

Predicted band size: 15 kDa

Positive control: Mouse small intestines tissue

Recommended dilution: 200-1000

Gel: 12% SDS-PAGE

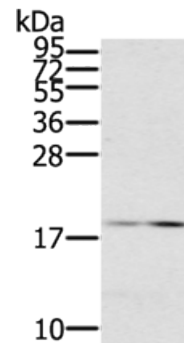
Lysate: 40 μ g

Lane: Mouse small intestines tissue

Primary antibody: ml120663(LGALS2 Antibody) at dilution 1/300

Secondary antibody: Goat anti rabbit IgG at 1/8000 dilution

Exposure time: 5 minutes



ELISA

Recommended dilution: 2000-5000

联系电话: 4008-898-798, 021-61725725

联系QQ: 2881505695, 2881505696

邮箱: mlbio_cn@yeah.net

网址: www.mlbio.cn