

## Anti-CENPN antibody

<b>Cat. No.</b>	ml122095
<b>Package</b>	25 µl/100 µl/200 µl
<b>Storage</b>	-20°C, pH7.4 PBS, 0.05% NaN3, 40% Glycerol

### Product overview

<b>Description</b>	Anti-CENPN rabbit polyclonal antibody
<b>Applications</b>	ELISA, WB, IHC
<b>Immunogen</b>	Full length fusion protein
<b>Reactivity</b>	Human
<b>Content</b>	1.1 mg/ml
<b>Host species</b>	Rabbit
<b>Ig class</b>	Immunogen-specific rabbit IgG
<b>Purification</b>	Antigen affinity purification

### Target information

<b>Symbol</b>	CENPN
<b>Full name</b>	centromere protein N
<b>Synonyms</b>	BM039; CENP-N; ICEN32; C16orf60
<b>Swissprot</b>	Q96H22

### Target Background

The protein encoded by this gene forms part of the nucleosome-associated complex and is important for kinetochore assembly. It is bound to kinetochores during S phase and G2 and recruits other proteins to the centromere. Pseudogenes of this gene are located on chromosome 2. Alternative splicing results in multiple transcript variants that encode different protein isoforms.

订购热线: 4008-898-798

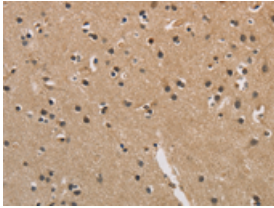
### Applications

#### Immunohistochemistry

Predicted cell location: Nucleus and Cytoplasm

Positive control: Human brain

Recommended dilution: 100-300

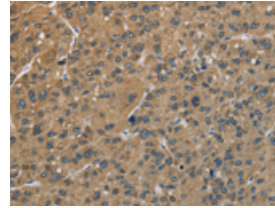


The image is immunohistochemistry of paraffin-embedded Human brain tissue using ml122095(CENPN Antibody) at dilution 1/70. (Original magnification: ×200)

Predicted cell location: Nucleus and Cytoplasm

Positive control: Human liver cancer

Recommended dilution: 100-300



The image is immunohistochemistry of paraffin-embedded Human liver cancer tissue using ml122095(CENPN Antibody) at dilution 1/70. (Original magnification: ×200)

#### Western blotting

Predicted band size: 40 kDa

Positive control: Human left kidney tissue lysate

Recommended dilution: 1000-5000

Gel: 8%SDS-PAGE

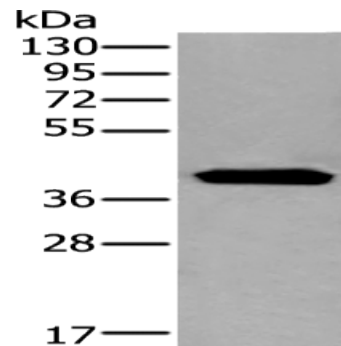
Lysate: 40 µg

Lane: Human left kidney tissue lysate

Primary antibody: ml122095(CENPN Antibody) at dilution 1/800

Secondary antibody: Goat anti rabbit IgG at 1/8000 dilution

Exposure time: 10 seconds



#### ELISA

Recommended dilution: 5000-10000

联系电话: 4008-898-798, 021-61725725

联系QQ: 2881505695, 2881505696

邮箱: mlbio\_cn@yeah.net

网址: www.mlbio.cn