

## Anti-RNF20 antibody

<b>Cat. No.</b>	ml123039
<b>Package</b>	25 µl/100 µl/200 µl
<b>Storage</b>	-20°C, pH7.4 PBS, 0.05% NaN <sub>3</sub> , 40% Glycerol

### Product overview

<b>Description</b>	Anti-RNF20 rabbit polyclonal antibody
<b>Applications</b>	ELISA, WB, IHC
<b>Immunogen</b>	Fusion protein of human RNF20
<b>Reactivity</b>	Human, Mouse
<b>Content</b>	0.2 mg/ml
<b>Host species</b>	Rabbit
<b>Ig class</b>	Immunogen-specific rabbit IgG
<b>Purification</b>	Antigen affinity purification

### Target information

<b>Symbol</b>	RNF20
<b>Full name</b>	ring finger protein 20, E3 ubiquitin protein ligase
<b>Synonyms</b>	BRE1; BRE1A; hBRE1
<b>Swissprot</b>	Q5VTR2

### Target Background

The protein encoded by this gene shares similarity with BRE1 of *S. cerevisiae*. The protein encoded by this human gene is an E3 ubiquitin ligase that regulates chromosome structure by monoubiquitinating histone H2B. This protein acts as a putative tumor suppressor and positively regulates the p53 tumor suppressor as well as numerous histone H2A and H2B genes. In contrast, this protein also suppresses the expression of several protooncogenes and growth-related genes, including many genes that are induced by epidermal growth factor.

订购热线: 4008-898-798

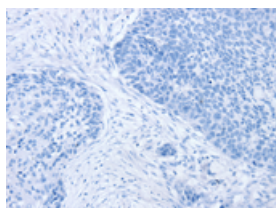
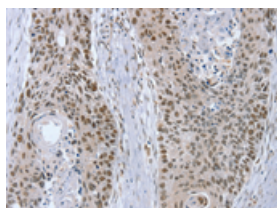
## Applications

### Immunohistochemistry

Predicted cell location: Nucleus

Positive control: Human esophagus cancer

Recommended dilution: 10-50

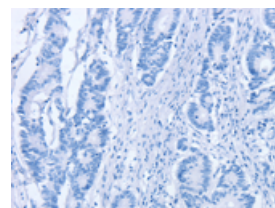
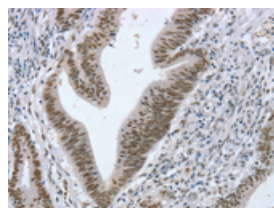


The image on the left is immunohistochemistry of paraffin-embedded Human esophagus cancer tissue using ml123039(RNF20 Antibody) at dilution 1/20, on the right is treated with fusion protein. (Original magnification:  $\times 200$ )

Predicted cell location: Nucleus

Positive control: Human colon cancer

Recommended dilution: 10-50



The image on the left is immunohistochemistry of paraffin-embedded Human colon cancer tissue using ml123039(RNF20 Antibody) at dilution 1/20, on the right is treated with fusion protein. (Original magnification:  $\times 200$ )

### Western blotting

Predicted band size: 114 kDa

Positive control: Hela, Jurkat, 231, A375, A172 and Lovo cells

Recommended dilution: 500-2000

Gel: 6%SDS-PAGE

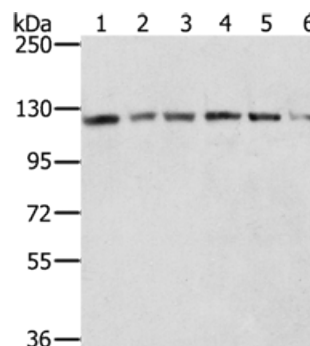
Lysate: 40  $\mu$ g

Lane 1-6: Hela cells, Jurkat cells, 231 cells, A375 cells, A172 cells, Lovo cells

Primary antibody: ml123039(RNF20 Antibody) at dilution 1/300

Secondary antibody: Goat anti rabbit IgG at 1/8000 dilution

Exposure time: 5 seconds



### ELISA

Recommended dilution: 2000-5000

联系电话: 4008-898-798, 021-61725725

联系QQ: 2881505695, 2881505696

邮箱: [mlbio\\_cn@yeah.net](mailto:mlbio_cn@yeah.net)

网址: [www.mlbio.cn](http://www.mlbio.cn)