

Anti-KLF11 antibody

Cat. No.	ml120901
Package	25 µl/100 µl/200 µl
Storage	-20°C, pH7.4 PBS, 0.05% NaN ₃ , 40% Glycerol

Product overview

Description	Anti-KLF11 rabbit polyclonal antibody
Applications	ELISA, WB
Immunogen	Fusion protein of human KLF11
Reactivity	Human, Mouse
Content	0.3 mg/ml
Host species	Rabbit
Ig class	Immunogen-specific rabbit IgG
Purification	Antigen affinity purification

Target information

Symbol	KLF11
Full name	Kruppel-like factor 11
Synonyms	FKLF; FKLF1; MODY7; TIEG2; Tieg3
Swissprot	O14901

Target Background

The protein encoded by this gene is a zinc finger transcription factor that binds to SP1-like sequences in epsilon- and gamma-globin gene promoters. This binding inhibits cell growth and causes apoptosis. Defects in this gene are a cause of maturity-onset diabetes of the young type 7 (MODY7). Three transcript variants encoding two different isoforms have been found for this gene.

订购热线: 4008-898-798

Applications

Western blotting

Predicted band size:55 kDa

Positive control:HUVEC, NIH/3T3, Hela and 293T cells

Recommended dilution: 500-2000

Gel: 6%SDS-PAGE

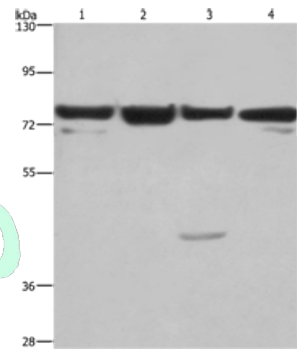
Lysate: 40 µg

Lane 1-4: HUVEC cells, NIH/3T3 cells, Hela cells, 293T cells

Primary antibody: ml120901(KLF11 Antibody) at dilution 1/350

Secondary antibody: Goat anti rabbit IgG at 1/8000 dilution

Exposure time: 30 seconds



ELISA

Recommended dilution:2000-5000

联系电话: 4008-898-798, 021-61725725

联系QQ: 2881505695, 2881505696

邮箱: mlbio_cn@yeah.net

网址: www.mlbio.cn