

Anti-AP2S1 antibody

Cat. No.	ml121638
Package	25 µl/100 µl/200 µl
Storage	-20°C, pH7.4 PBS, 0.05% NaN ₃ , 40% Glycerol

Product overview

Description	Anti-AP2S1 rabbit polyclonal antibody
Applications	ELISA, WB
Immunogen	Fusion protein of human AP2S1
Reactivity	Human, Mouse, Rat
Content	0.2 mg/ml
Host species	Rabbit
Ig class	Immunogen-specific rabbit IgG
Purification	Antigen affinity purification

Target information

Symbol	AP2S1
Full name	adaptor-related protein complex 2, sigma 1 subunit
Synonyms	AP17; HHC3; CLAPS2; AP17-DELTA
Swissprot	P53680

Target Background

One of two major clathrin-associated adaptor complexes, AP-2, is a heterotetramer which is associated with the plasma membrane. This complex is composed of two large chains, a medium chain, and a small chain. This gene encodes the small chain of this complex. Alternative splicing has been observed in this gene and results in two known transcripts.

订购热线: 4008-898-798

Applications

Western blotting

Predicted band size: 17 kDa

Positive control: Human fetal muscle tissue

Recommended dilution: 200-1000

Gel: 12+15% SDS-PAGE

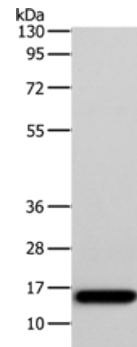
Lysate: 40 µg

Lane: Human fetal muscle tissue

Primary antibody: ml121638 (AP2S1 Antibody) at dilution 1/250

Secondary antibody: Goat anti rabbit IgG at 1/8000 dilution

Exposure time: 1 minute



ELISA

Recommended dilution: 1000-2000

联系电话: 4008-898-798, 021-61725725

联系QQ: 2881505695, 2881505696

邮箱: mlbio_cn@yeah.net

网址: www.mlbio.cn