

Anti-MAP4K2 antibody

Cat. No.	ml121799
Package	25 µl/100 µl/200 µl
Storage	-20°C, pH7.4 PBS, 0.05% NaN ₃ , 40% Glycerol

Product overview

Description	Anti-MAP4K2 rabbit polyclonal antibody
Applications	ELISA, WB
Immunogen	Fusion protein of human MAP4K2
Reactivity	Human, Mouse
Content	0.3 mg/ml
Host species	Rabbit
Ig class	Immunogen-specific rabbit IgG
Purification	Antigen affinity purification

Target information

Symbol	MAP4K2
Full name	mitogen-activated protein kinase kinase kinase kinase 2
Synonyms	GCK; BL44; RAB8IP
Swissprot	Q12851

Target Background

The protein encoded by this gene is a member of the serine/threonine protein kinase family. Although this kinase is found in many tissues, its expression in lymphoid follicles is restricted to the cells of germinal centre, where it may participate in B-cell differentiation. This kinase can be activated by TNF-alpha, and has been shown to specifically activate MAP kinases. This kinase is also found to interact with TNF receptor-associated factor 2 (TRAF2), which is involved in the activation of MAP3K1/MEKK1.

订购热线: 4008-898-798

Applications

Western blotting

Predicted band size: 92 kDa

Positive control: Human fetal brain tissue

Recommended dilution: 1000-5000

Gel: 8%SDS-PAGE

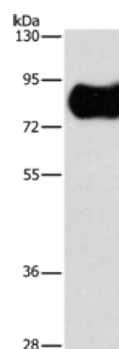
Lysate: 40 µg

Lane: Human fetal brain tissue

Primary antibody: ml121799(MAP4K2 Antibody) at dilution 1/900

Secondary antibody: Goat anti rabbit IgG at 1/8000 dilution

Exposure time: 30 seconds



ELISA

Recommended dilution: 2000-10000

联系电话: 4008-898-798, 021-61725725

联系QQ: 2881505695, 2881505696

邮箱: mlbio_cn@yeah.net

网址: www.mlbio.cn