

## Anti-NEK2 antibody

<b>Cat. No.</b>	ml121841
<b>Package</b>	25 µl/100 µl/200 µl
<b>Storage</b>	-20°C, pH7.4 PBS, 0.05% NaN <sub>3</sub> , 40% Glycerol

### Product overview

<b>Description</b>	Anti-NEK2 rabbit polyclonal antibody
<b>Applications</b>	ELISA, WB
<b>Immunogen</b>	Fusion protein of human NEK2
<b>Reactivity</b>	Human, Mouse
<b>Content</b>	0.3 mg/ml
<b>Host species</b>	Rabbit
<b>Ig class</b>	Immunogen-specific rabbit IgG
<b>Purification</b>	Antigen affinity purification

### Target information

<b>Symbol</b>	NEK2
<b>Full name</b>	NIMA-related kinase 2
<b>Synonyms</b>	NLK1; NEK2A; HsPK21
<b>Swissprot</b>	P51955

### Target Background

This gene encodes a serine/threonine-protein kinase that is involved in mitotic regulation. This protein is localized to the centrosome, and undetectable during G1 phase, but accumulates progressively throughout the S phase, reaching maximal levels in late G2 phase. Alternatively spliced transcript variants encoding different isoforms with distinct C-termini have been noted for this gene.

订购热线: 4008-898-798

**Applications**

**Western blotting**

Predicted band size:52 kDa

Positive control:Lovo cells

Recommended dilution: 500-2000

Gel: 8%SDS-PAGE

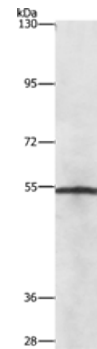
Lysate: 40  $\mu$ g

Lane: Lovo cells

Primary antibody: ml121841(NEK2 Antibody) at dilution 1/727

Secondary antibody: Goat anti rabbit IgG at 1/8000 dilution

Exposure time: 1 minute



**ELISA**

Recommended dilution:2000-5000

联系电话: 4008-898-798, 021-61725725

联系QQ: 2881505695, 2881505696

邮箱: mlbio\_cn@yeah.net

网址: www.mlbio.cn