

## Anti-SLC5A9 antibody

<b>Cat. No.</b>	ml162252
<b>Package</b>	25 µl/100 µl/200 µl
<b>Storage</b>	-20°C, pH7.4 PBS, 0.05% NaN <sub>3</sub> , 40% Glycerol

### Product overview

<b>Description</b>	Anti-SLC5A9 rabbit polyclonal antibody
<b>Applications</b>	ELISA, WB
<b>Immunogen</b>	Synthetic peptide of human SLC5A9
<b>Reactivity</b>	Human
<b>Content</b>	0.7 mg/ml
<b>Host species</b>	Rabbit
<b>Ig class</b>	Immunogen-specific rabbit IgG
<b>Purification</b>	Antigen affinity purification

### Target information

<b>Symbol</b>	SLC5A9
<b>Full name</b>	solute carrier family 5 (sodium/sugar cotransporter), member 9
<b>Synonyms</b>	SGLT4
<b>Swissprot</b>	Q2M3M2

### Target Background

SGLT-4 (sodium/glucose cotransporter 4), also known as SLC5A9 (solute carrier family 5 member 9), is a 681 amino acid multi-pass membrane protein that participates in the sodium-dependent transport of D-fructose, D-mannose and D-glucose. A member of the sodium:solute symporter (SSF) family, SGLT-4 is found in small intestine and kidney.

订购热线: 4008-898-798

**Applications**

**Western blotting**

Predicted band size:74 kDa

Positive control:293T, hepg2 and A172 cells

Recommended dilution: 500-2000

Gel: 8%SDS-PAGE

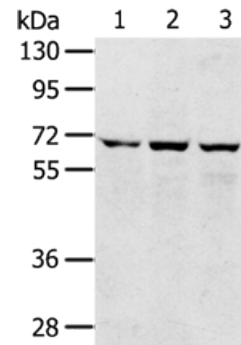
Lysate: 40 µg

Lane 1-3: 293T cells, hepg2 cells, A172 cells

Primary antibody: ml162252(SLC5A9 Antibody) at dilution 1/300

Secondary antibody: Goat anti rabbit IgG at 1/8000 dilution

Exposure time: 1 minute



**ELISA**

Recommended dilution:2000-5000

联系电话: 4008-898-798, 021-61725725

联系QQ: 2881505695, 2881505696

邮箱: [mlbio\\_cn@yeah.net](mailto:mlbio_cn@yeah.net)

网址: [www.mlbio.cn](http://www.mlbio.cn)