

Anti-ASTE1 antibody

Cat. No. ml125730
Package 25 μ l/100 μ l/200 μ l
Storage -20°C, pH7.4 PBS, 0.05% NaN₃, 40% Glycerol

Product overview

Description Anti-ASTE1 rabbit polyclonal antibody
Applications ELISA, WB, IHC
Immunogen Fusion protein of human ASTE1
Reactivity Human
Content 0.9 mg/ml
Host species Rabbit
Ig class Immunogen-specific rabbit IgG
Purification Antigen affinity purification

Target information

Symbol ASTE1
Full name asteroid homolog 1
Synonyms HT001
Swissprot Q2TB18

Target Background

Possible role in EGF receptor signaling.

订购热线: 4008-898-798

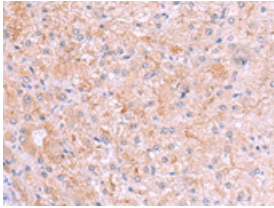
Applications

Immunohistochemistry

Predicted cell location: Cytoplasm

Positive control: Human liver cancer

Recommended dilution: 50-300



The image is immunohistochemistry of paraffin-embedded Human liver cancer tissue using ml125730(ASTE1 Antibody) at dilution 1/50.

(Original magnification: ×200)

Western blotting

Predicted band size: 77 kDa

Positive control: A172 cell lysate

Recommended dilution: 200-1000

Gel: 6%SDS-PAGE

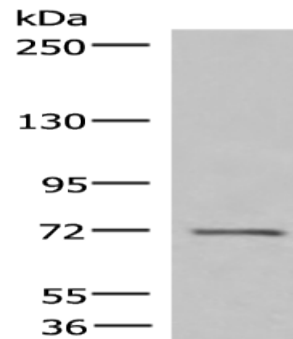
Lysate: 40 µg

Lane: A172 cell lysate

Primary antibody: ml125730(ASTE1 Antibody) at dilution 1/300

Secondary antibody: Goat anti rabbit IgG at 1/8000 dilution

Exposure time: 4 minutes



ELISA

Recommended dilution: 5000-10000

联系电话: 4008-898-798, 021-61725725

联系QQ: 2881505695, 2881505696

邮箱: mlbio_cn@yeah.net

网址: www.mlbio.cn