

Anti-ZNF471 antibody

Cat. No.	ml152105
Package	25 µl/100 µl/200 µl
Storage	-20°C, pH7.4 PBS, 0.05% NaN ₃ , 40% Glycerol

Product overview

Description	Anti-ZNF471 rabbit polyclonal antibody
Applications	ELISA, WB
Immunogen	Synthetic peptide of human ZNF471
Reactivity	Human
Content	2.7 mg/ml
Host species	Rabbit
Ig class	Immunogen-specific rabbit IgG
Purification	Antigen affinity purification

Target information

Symbol	ZNF471
Full name	zinc finger protein 471
Synonyms	ERP1; Z1971
Swissprot	Q9BX82

Target Background

This protein belongs to the krueppel C2H2-type zinc-finger protein family. It may be involved in transcriptional regulation. The subcellular location of this protein is Nucleus. It contains 15 C2H2-type zinc fingers and one KRAB domain.

订购热线: 4008-898-798

Applications

Western blotting

Predicted band size:73 kDa

Positive control:Hela, Jurkat, Incap, 293T and 231 cells

Recommended dilution: 200-1000

Gel: 8%SDS-PAGE

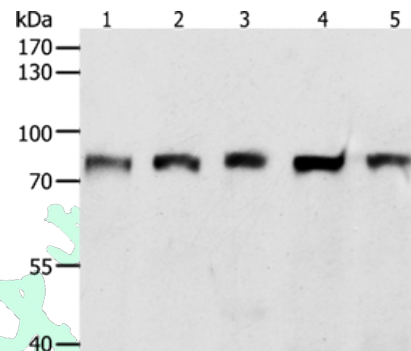
Lysate: 40 µg

Lane 1-5: Hela cells, Jurkat cells, Incap cells, 293T cells,
231 cells

Primary antibody: ml152105(ZNF471 Antibody) at dilution
1/250

Secondary antibody: Goat anti rabbit IgG at 1/8000 dilution

Exposure time: 10 seconds



ELISA

Recommended dilution:1000-2000

联系电话: 4008-898-798, 021-61725725

联系QQ: 2881505695, 2881505696

邮箱: mlbio_cn@yeah.net

网址: www.mlbio.cn