

Anti-ZIC3 antibody

Cat. No.	ml156034
Package	25 µl/100 µl/200 µl
Storage	-20°C, pH7.4 PBS, 0.05% NaN ₃ , 40% Glycerol

Product overview

Description	Anti-ZIC3 rabbit polyclonal antibody
Applications	ELISA, WB, IHC
Immunogen	Synthetic peptide of human ZIC3
Reactivity	Human, Mouse
Content	0.7 mg/ml
Host species	Rabbit
Ig class	Immunogen-specific rabbit IgG
Purification	Antigen affinity purification

Target information

Symbol	ZIC3
Full name	Zic family member 3
Synonyms	HTX; HTX1; ZNF203; VACTERLX
Swissprot	O60481

Target Background

This gene encodes a member of the ZIC family of C2H2-type zinc finger proteins. This nuclear protein probably functions as a transcription factor in early stages of left-right body axis formation. Mutations in this gene cause X-linked visceral heterotaxy, which includes congenital heart disease and left-right axis defects in organs.

订购热线: 4008-898-798

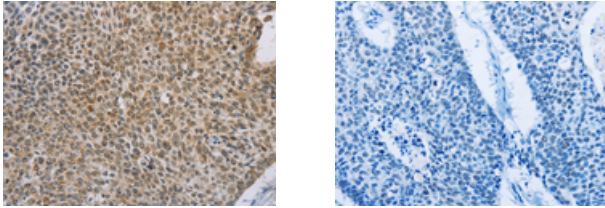
Applications

Immunohistochemistry

Predicted cell location: Nucleus

Positive control: Human lung cancer

Recommended dilution: 100-300



The image on the left is immunohistochemistry of paraffin-embedded Human lung cancer tissue using ml156034(ZIC3 Antibody) at dilution 1/100, on the right is treated with synthetic peptide. (Original magnification: $\times 200$)

Western blotting

Predicted band size: 51 kDa

Positive control: HepG2 cells

Recommended dilution: 200-1000

Gel: 8%SDS-PAGE

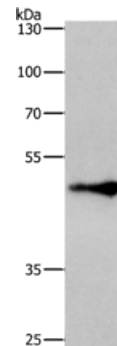
Lysate: 40 μ g

Lane: HepG2 cells

Primary antibody: ml156034(ZIC3 Antibody) at dilution 1/500

Secondary antibody: Goat anti rabbit IgG at 1/8000 dilution

Exposure time: 30 seconds



ELISA

Recommended dilution: 1000-2000

联系电话: 4008-898-798, 021-61725725

联系QQ: 2881505695, 2881505696

邮箱: mlbio_cn@yeah.net

网址: www.mlbio.cn