

## Anti-YWHAB antibody

|                 |   |
|-----------------|---|
| <b>Cat. No.</b> | ml160011  |
| <b>Package</b>  | 25 µl/100 µl/200 µl                                     |
| <b>Storage</b>  | -20°C, pH7.4 PBS, 0.05% NaN <sub>3</sub> , 40% Glycerol |

### Product overview

|                     |                                       |
|---------------------|---------------------------------------|
| <b>Description</b>  | Anti-YWHAB rabbit polyclonal antibody |
| <b>Applications</b> | ELISA, WB                             |
| <b>Immunogen</b>    | Synthetic peptide of human YWHAB      |
| <b>Reactivity</b>   | Human, Mouse, Rat                     |
| <b>Content</b>      | 0.5 mg/ml                             |
| <b>Host species</b> | Rabbit                                |
| <b>Ig class</b>     | Immunogen-specific rabbit IgG         |
| <b>Purification</b> | Antigen affinity purification         |

### Target information

|                  |  |
|------------------|--|
| <b>Symbol</b>    | YWHAB  |
| <b>Full name</b> | Tyrosine 3-monooxygenase/tryptophan 5-monooxygenase activation protein, beta polypeptide |
| <b>Synonyms</b>  | HS1, GW128, YWHAA, KCIP-1  |
| <b>Swissprot</b> | P31946   |

### Target Background

This gene encodes a protein belonging to the 14-3-3 family of proteins, members of which mediate signal transduction by binding to phosphoserine-containing proteins. This highly conserved protein family is found in both plants and mammals. The encoded protein has been shown to interact with RAF1 and CDC25 phosphatases, suggesting that it may play a role in linking mitogenic signaling and the cell cycle machinery. Two transcript variants, which encode the same protein, have been identified for this gene.

订购热线: 4008-898-798

#### Applications

##### Western blotting

Predicted band size: 28 kDa

Positive control: HT-29 cells and Mouse brain tissue

Recommended dilution: 1000-5000

Gel: 8%SDS-PAGE

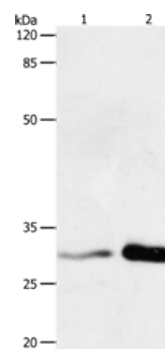
Lysate: 40 µg

Lane 1-2: HT29 cells, Mouse brain tissue

Primary antibody: ml160011(YWHAB Antibody) at dilution 1/750

Secondary antibody: Goat anti rabbit IgG at 1/8000 dilution

Exposure time: 1 minute



##### ELISA

Recommended dilution: 2000-10000

联系电话: 4008-898-798, 021-61725725

联系QQ: 2881505695, 2881505696

邮箱: [mlbio\\_cn@yeah.net](mailto:mlbio_cn@yeah.net)

网址: [www.mlbio.cn](http://www.mlbio.cn)