

## Anti-HTR1A antibody

<b>Cat. No.</b>	ml160012
<b>Package</b>	25 µl/100 µl/200 µl
<b>Storage</b>	-20°C, pH7.4 PBS, 0.05% NaN <sub>3</sub> , 40% Glycerol

### Product overview

<b>Description</b>	Anti-HTR1A rabbit polyclonal antibody
<b>Applications</b>	ELISA, WB
<b>Immunogen</b>	Synthetic peptide of human HTR1A
<b>Reactivity</b>	Human, Mouse, Rat
<b>Content</b>	0.6 mg/ml
<b>Host species</b>	Rabbit
<b>Ig class</b>	Immunogen-specific rabbit IgG
<b>Purification</b>	Antigen affinity purification

### Target information

<b>Symbol</b>	HTR1A
<b>Full name</b>	5-hydroxytryptamine (serotonin) receptor 1A, G protein-coupled
<b>Synonyms</b>	G-21; 5HT1a; PFMCD; 5-HT1A; 5-HT-1A; ADRBRL1; ADRB2RL1
<b>Swissprot</b>	P08908

### Target Background

This gene encodes a G protein-coupled receptor for 5-hydroxytryptamine (serotonin), and belongs to the 5-hydroxytryptamine receptor subfamily. Serotonin has been implicated in a number of physiologic processes and pathologic conditions. Inactivation of this gene in mice results in behavior consistent with an increased anxiety and stress response. Mutation in the promoter of this gene has been associated with menstrual cycle-dependent periodic fevers

订购热线: 4008-898-798

**Applications**

**Western blotting**

Predicted band size:46 kDa

Positive control:HepG2 cells and Mouse brain tissue

Recommended dilution: 1000-5000

Gel: 8%SDS-PAGE

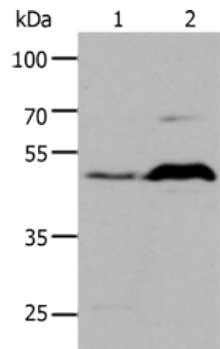
Lysate: 30 µg

Lane 1-2: HepG2 cells, Mouse brain tissue

Primary antibody: ml160012(HTR1A Antibody) at dilution 1/1000

Secondary antibody: Goat anti rabbit IgG at 1/8000 dilution

Exposure time: 30 seconds



**ELISA**

Recommended dilution:2000-10000

联系电话: 4008-898-798, 021-61725725

联系QQ: 2881505695, 2881505696

邮箱: mlbio\_cn@yeah.net

网址: www.mlbio.cn