

## Anti-CDK1 antibody

<b>Cat. No.</b>	ml160158
<b>Package</b>	25 µl/100 µl/200 µl
<b>Storage</b>	-20°C, pH7.4 PBS, 0.05% NaN <sub>3</sub> , 40% Glycerol

### Product overview

<b>Description</b>	Anti-CDK1 rabbit polyclonal antibody
<b>Applications</b>	ELISA, WB, IHC
<b>Immunogen</b>	Synthetic peptide of human CDK1
<b>Reactivity</b>	Human, Mouse, Rat
<b>Content</b>	0.5 mg/ml
<b>Host species</b>	Rabbit
<b>Ig class</b>	Immunogen-specific rabbit IgG
<b>Purification</b>	Antigen affinity purification

### Target information

<b>Symbol</b>	CDK1
<b>Full name</b>	Cyclin-dependent kinase 1
<b>Synonyms</b>	CDC2, CDC28A, P34CDC2
<b>Swissprot</b>	P06493

### Target Background

The protein encoded by this gene is a member of the Ser/Thr protein kinase family. This protein is a catalytic subunit of the highly conserved protein kinase complex known as M-phase promoting factor (MPF), which is essential for G1/S and G2/M phase transitions of eukaryotic cell cycle. Mitotic cyclins stably associate with this protein and function as regulatory subunits. The kinase activity of this protein is controlled by cyclin accumulation and destruction through the cell cycle. The phosphorylation and dephosphorylation of this protein also play important regulatory roles in cell cycle control. Alternatively spliced transcript variants encoding different isoforms have been found for this gene.

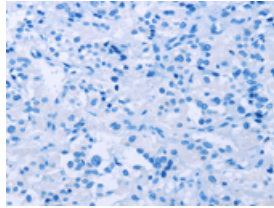
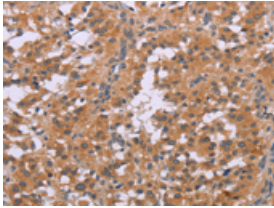
## Applications

### Immunohistochemistry

Predicted cell location: Cytoplasm

Positive control: Human thyroid cancer

Recommended dilution: 25-100

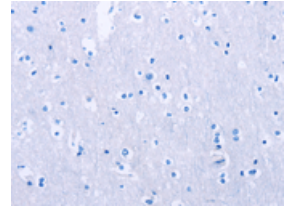
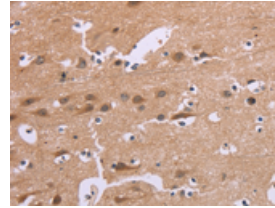


The image on the left is immunohistochemistry of paraffin-embedded Human thyroid cancer tissue using ml160158(CDK1 Antibody) at dilution 1/20, on the right is treated with synthetic peptide. (Original magnification:  $\times 200$ )

Predicted cell location: Cytoplasm

Positive control: Human brain

Recommended dilution: 25-100



The image on the left is immunohistochemistry of paraffin-embedded Human brain tissue using ml160158(CDK1 Antibody) at dilution 1/20, on the right is treated with synthetic peptide. (Original magnification:  $\times 200$ )

### Western blotting

Predicted band size: 34 kDa

Positive control: Jurkat, HeLa and HT-29 cells

Recommended dilution: 200-1000

Gel: 8%SDS-PAGE

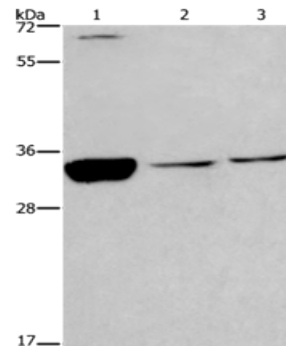
Lysate: 40  $\mu$ g

Lane 1-3: Jurkat cells, HeLa cells, HT-29 cells

Primary antibody: ml160158(CDK1 Antibody) at dilution 1/300

Secondary antibody: Goat anti rabbit IgG at 1/8000 dilution

Exposure time: 5 minutes



### ELISA

Recommended dilution: 1000-2000

联系电话: 4008-898-798, 021-61725725

联系QQ: 2881505695, 2881505696

邮箱: mlbio\_cn@yeah.net

网址: www.mlbio.cn