

## Anti-CSNK1A1 antibody

<b>Cat. No.</b>	ml160174
<b>Package</b>	25 µl/100 µl/200 µl
<b>Storage</b>	-20°C, pH7.4 PBS, 0.05% NaN <sub>3</sub> , 40% Glycerol

### Product overview

<b>Description</b>	Anti-CSNK1A1 rabbit polyclonal antibody
<b>Applications</b>	ELISA, WB, IHC
<b>Immunogen</b>	Synthetic peptide of human CSNK1A1
<b>Reactivity</b>	Human, Mouse
<b>Content</b>	0.1 mg/ml
<b>Host species</b>	Rabbit
<b>Ig class</b>	Immunogen-specific rabbit IgG
<b>Purification</b>	Antigen affinity purification

### Target information

<b>Symbol</b>	CSNK1A1
<b>Full name</b>	casein kinase 1, alpha 1
<b>Synonyms</b>	CK1; CK1a; CKIa; HLCDGP1; PRO2975; HEL-S-77p
<b>Swissprot</b>	P48729

### Target Background

Casein Kinase I (CK1 or CKI) is the name given to a family of kinases consisting of multiple isoforms ( $\alpha$ ,  $\alpha'$ ,  $\beta$ ,  $\gamma$ 1-3,  $\delta$ , and  $\epsilon$ ) with a conserved N-terminal kinase domain and a variable C-terminal sequence that determines subcellular localization and regulates enzyme activity.

订购热线: 4008-898-798

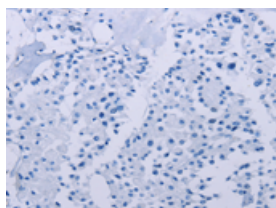
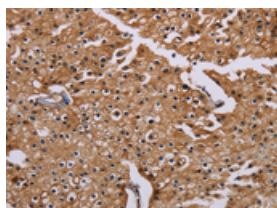
## Applications

### Immunohistochemistry

Predicted cell location: Cytoplasm

Positive control: Human prostate cancer

Recommended dilution: 25-100

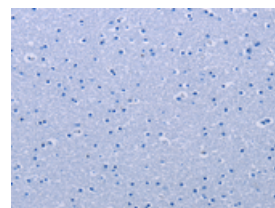
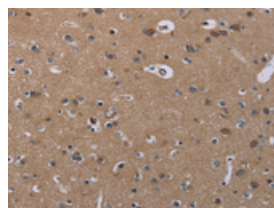


The image on the left is immunohistochemistry of paraffin-embedded Human prostate cancer tissue using ml160174(CSNK1A1 Antibody) at dilution 1/20, on the right is treated with synthetic peptide. (Original magnification:  $\times 200$ )

Predicted cell location: Cytoplasm

Positive control: Human brain

Recommended dilution: 25-100



The image on the left is immunohistochemistry of paraffin-embedded Human brain tissue using ml160174(CSNK1A1 Antibody) at dilution 1/20, on the right is treated with synthetic peptide. (Original magnification:  $\times 200$ )

### Western blotting

Predicted band size: 39 kDa

Positive control: A549 cells

Recommended dilution: 200-1000

Gel: 8%SDS-PAGE

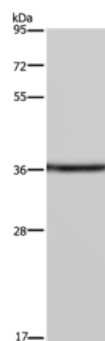
Lysate: 40  $\mu$ g

Lane: A549 cells

Primary antibody: ml160174(CSNK1A1 Antibody) at dilution 1/200

Secondary antibody: Goat anti rabbit IgG at 1/8000 dilution

Exposure time: 10 minutes



### ELISA

Recommended dilution: 1000-2000

联系电话: 4008-898-798, 021-61725725

联系QQ: 2881505695, 2881505696

邮箱: [mlbio\\_cn@yeah.net](mailto:mlbio_cn@yeah.net)

网址: [www.mlbio.cn](http://www.mlbio.cn)