

Anti-PRMT5 antibody

Cat. No.	ml160716
Package	25 µl/100 µl/200 µl
Storage	-20°C, pH7.4 PBS, 0.05% NaN ₃ , 40% Glycerol

Product overview

Description	Anti-PRMT5 rabbit polyclonal antibody
Applications	ELISA, WB, IHC
Immunogen	Synthetic peptide of human PRMT5
Reactivity	Human, Mouse, Rat
Content	0.3 mg/ml
Host species	Rabbit
Ig class	Immunogen-specific rabbit IgG
Purification	Antigen affinity purification

Target information

Symbol	PRMT5
Full name	protein arginine methyltransferase 5
Synonyms	JBP1, SKB1, IBP72, SKB1Hs, HRMT1L5
Swissprot	O14744

Target Background

Protein arginine methyltransferase 5 has been shown to interact with WD repeat-containing protein 77, CLNS1A, Janus kinase 2, SNRPD3 and SUPT5H. Arginine methyltransferase that can both catalyze the formation of omega-N monomethylarginine (MMA) and symmetrical dimethylarginine (sDMA), with a preference for the formation of MMA. Specifically mediates the symmetrical dimethylation of arginine residues in the small nuclear ribonucleoproteins Sm D1 (SNRPD1) and Sm D3 (SNRPD3); such methylation being required for the assembly and biogenesis of snRNP core particles. Methylates SUPT5H. Mono- and dimethylates arginine residues of myelin basic protein (MBP) in vitro. Plays a role in the assembly of snRNP core particles. May play a role in cytokine-activated transduction pathways. Negatively regulates cyclin E1 promoter activity and cellular proliferation.

订购热线: 4008-898-798

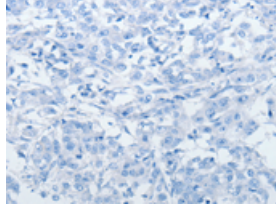
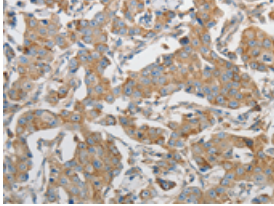
Applications

Immunohistochemistry

Predicted cell location: Cytoplasm

Positive control: Human breast cancer

Recommended dilution: 15-50

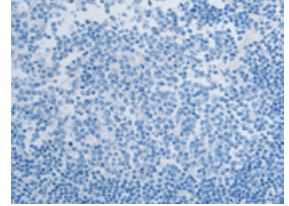
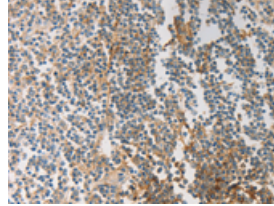


The image on the left is immunohistochemistry of paraffin-embedded Human breast cancer tissue using ml160716(PRMT5 Antibody) at dilution 1/20, on the right is treated with synthetic peptide. (Original magnification: $\times 200$)

Predicted cell location: Cytoplasm

Positive control: Human tonsil

Recommended dilution: 15-50



The image on the left is immunohistochemistry of paraffin-embedded Human tonsil tissue using ml160716(PRMT5 Antibody) at dilution 1/20, on the right is treated with synthetic peptide. (Original magnification: $\times 200$)

Western blotting

Predicted band size: 71 kDa

Positive control: K562, hela and 293T cells

Recommended dilution: 200-1000

Gel: 10%SDS-PAGE

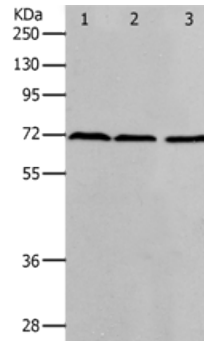
Lysate: 40 μ g

Lane 1-3: K562 cells, hela cells, 293T cells

Primary antibody: ml160716(PRMT5 Antibody) at dilution 1/400

Secondary antibody: Goat anti rabbit IgG at 1/8000 dilution

Exposure time: 2 minutes



ELISA

Recommended dilution: 1000-2000

联系电话: 4008-898-798, 021-61725725

联系QQ: 2881505695, 2881505696

邮箱: mlbio_cn@yeah.net

网址: www.mlbio.cn