

Anti-PINK1 antibody

Cat. No.	ml160935
Package	25 µl/100 µl/200 µl
Storage	-20°C, pH7.4 PBS, 0.05% NaN ₃ , 40% Glycerol

Product overview

Description	Anti-PINK1 rabbit polyclonal antibody
Applications	ELISA, WB
Immunogen	Synthetic peptide of human PINK1
Reactivity	Human, Mouse
Content	0.1 mg/ml
Host species	Rabbit
Ig class	Immunogen-specific rabbit IgG
Purification	Antigen affinity purification

Target information

Symbol	PINK1
Full name	PTEN induced putative kinase 1
Synonyms	BRPK; PARK6
Swissprot	Q9BXM7

Target Background

This gene encodes a serine/threonine protein kinase that localizes to mitochondria. It is thought to protect cells from stress-induced mitochondrial dysfunction. Mutations in this gene cause one form of autosomal recessive early-onset Parkinson disease.

订购热线: 4008-898-798

Applications

Western blotting

Predicted band size:63 kDa

Positive control:Human fetal brain tissue

Recommended dilution: 500-2000

Gel: 10%SDS-PAGE

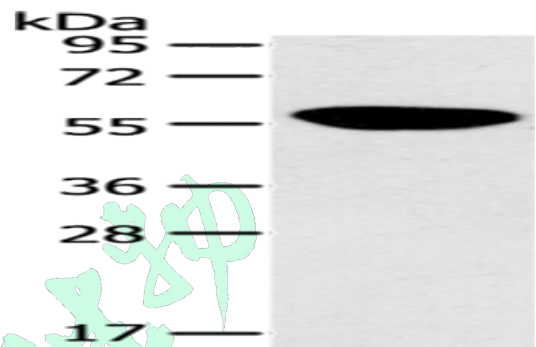
Lysate: 40 μ g

Lane: Human fetal brain tissue

Primary antibody: ml160935(PINK1 Antibody) at dilution 1/125

Secondary antibody: Goat anti rabbit IgG at 1/8000 dilution

Exposure time: 10 seconds



ELISA

Recommended dilution:2000-5000

联系电话: 4008-898-798, 021-61725725

联系QQ: 2881505695, 2881505696

邮箱: mlbio_cn@yeah.net

网址: www.mlbio.cn