

Anti-JRKL antibody

Cat. No.	ml164302
Package	25 µl/100 µl/200 µl
Storage	-20°C, pH7.4 PBS, 0.05% NaN ₃ , 40% Glycerol

Product overview

Description	Anti-JRKL rabbit polyclonal antibody
Applications	ELISA, WB
Immunogen	Synthetic peptide of human JRKL
Reactivity	Human, Mouse
Content	0.96 mg/ml
Host species	Rabbit
Ig class	Immunogen-specific rabbit IgG
Purification	Antigen affinity purification

Target information

Symbol	JRKL
Full name	JRK like
Synonyms	HHMJG
Swissprot	Q9Y4A0

Target Background

The function of this gene has not yet been defined, however, the encoded protein shares similarity with the human (41% identical) and mouse (34% identical) jerky gene products. This protein may act as a nuclear regulatory protein. Alternatively spliced transcript variants have been found for this gene.

订购热线: 4008-898-798

Applications

Western blotting

Predicted band size:60 kDa

Positive control:Juakat and K562 cell lysates

Recommended dilution: 1000-5000

Gel: 8%SDS-PAGE

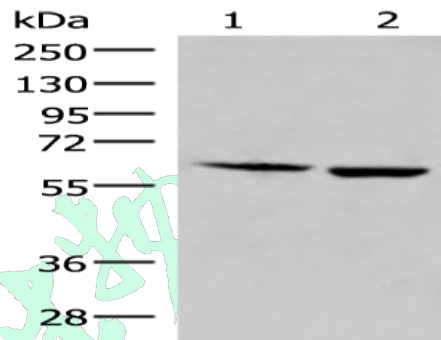
Lysate: 40 µg

Lane 1-2: Juakat and K562 cell lysates

Primary antibody: ml164302(JRKL Antibody) at dilution 1/800

Secondary antibody: Goat anti rabbit IgG at 1/5000 dilution

Exposure time: 20 seconds



ELISA

Recommended dilution:5000-10000

联系电话: 4008-898-798, 021-61725725

联系QQ: 2881505695, 2881505696

邮箱: mlbio_cn@yeah.net

网址: www.mlbio.cn