

## Anti-AMPD1 antibody

<b>Cat. No.</b>	ml161272
<b>Package</b>	25 µl/100 µl/200 µl
<b>Storage</b>	-20°C, pH7.4 PBS, 0.05% NaN <sub>3</sub> , 40% Glycerol

### Product overview

<b>Description</b>	Anti-AMPD1 rabbit polyclonal antibody
<b>Applications</b>	ELISA, WB, IHC
<b>Immunogen</b>	Synthetic peptide of human AMPD1
<b>Reactivity</b>	Human
<b>Content</b>	1 mg/ml
<b>Host species</b>	Rabbit
<b>Ig class</b>	Immunogen-specific rabbit IgG
<b>Purification</b>	Antigen affinity purification

### Target information

<b>Symbol</b>	AMPD1
<b>Full name</b>	adenosine monophosphate deaminase 1
<b>Synonyms</b>	MAD; MADA
<b>Swissprot</b>	P23109

### Target Background

Adenosine monophosphate deaminase 1 catalyzes the deamination of AMP to IMP in skeletal muscle and plays an important role in the purine nucleotide cycle. Two other genes have been identified, AMPD2 and AMPD3, for the liver- and erythrocyte-specific isoforms, respectively. Deficiency of the muscle-specific enzyme is apparently a common cause of exercise-induced myopathy and probably the most common cause of metabolic myopathy in the human. Alternatively spliced transcript variants encoding different isoforms have been identified in this gene.

订购热线: 4008-898-798

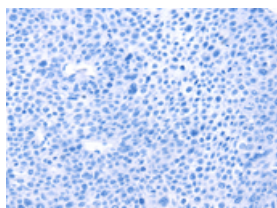
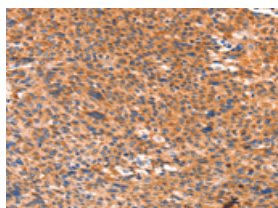
## Applications

### Immunohistochemistry

Predicted cell location: Cytoplasm

Positive control: Human liver cancer

Recommended dilution: 100-300

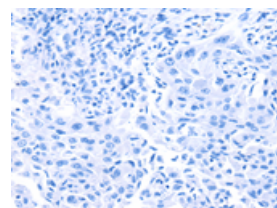
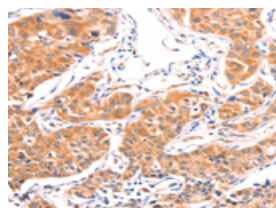


The image on the left is immunohistochemistry of paraffin-embedded Human liver cancer tissue using ml161272(AMPD1 Antibody) at dilution 1/80, on the right is treated with synthetic peptide. (Original magnification:  $\times 200$ )

Predicted cell location: Cytoplasm

Positive control: Human lung cancer

Recommended dilution: 100-300



The image on the left is immunohistochemistry of paraffin-embedded Human lung cancer tissue using ml161272(AMPD1 Antibody) at dilution 1/80, on the right is treated with synthetic peptide. (Original magnification:  $\times 200$ )

### Western blotting

Predicted band size: 90 kDa

Positive control: Human fetal muscle tissue, K562 and hela cells

Recommended dilution: 1000-5000

Gel: 8%SDS-PAGE

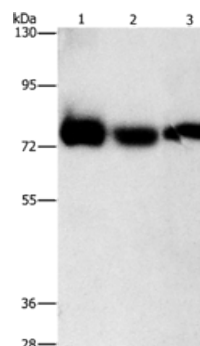
Lysate: 40  $\mu$ g

Lane 1-3: Human fetal muscle tissue, K562 cells, hela cells

Primary antibody: ml161272(AMPD1 Antibody) at dilution 1/1600

Secondary antibody: Goat anti rabbit IgG at 1/8000 dilution

Exposure time: 3 seconds



### ELISA

Recommended dilution: 2000-10000

联系电话: 4008-898-798, 021-61725725

联系QQ: 2881505695, 2881505696

邮箱: [mlbio\\_cn@yeah.net](mailto:mlbio_cn@yeah.net)

网址: [www.mlbio.cn](http://www.mlbio.cn)