

Anti-ADPRHL2 antibody

Cat. No.	ml161318
Package	25 µl/100 µl/200 µl
Storage	-20°C, pH7.4 PBS, 0.05% NaN ₃ , 40% Glycerol

Product overview

Description	Anti-ADPRHL2 rabbit polyclonal antibody
Applications	ELISA, WB
Immunogen	Synthetic peptide of human ADPRHL2
Reactivity	Human, Mouse
Content	0.2 mg/ml
Host species	Rabbit
Ig class	Immunogen-specific rabbit IgG
Purification	Antigen affinity purification

Target information

Symbol	ADPRHL2
Full name	ADP-ribosylhydrolase like 2
Synonyms	ARH3
Swissprot	Q9NX46

Target Background

This gene encodes a member of the ADP-ribosylglycohydrolase family. The encoded enzyme catalyzes the removal of ADP-ribose from ADP-ribosylated proteins. This enzyme localizes to the mitochondria, in addition to the nucleus and cytoplasm. Poly(ADP-ribose) synthesized after DNA damage is only present transiently and is rapidly degraded by poly(ADP-ribose) glycohydrolase. Poly(ADP-ribose) metabolism may be required for maintenance of the normal function of neuronal cells. Generates ADP-ribose from poly-(ADP-ribose), but does not hydrolyze ADP-ribose-arginine, -cysteine, -diphthamide, or -asparagine bonds. Due to catalytic inactivity of PARG mitochondrial isoforms, ARH3 is the only PAR hydrolyzing enzyme in mitochondria.

订购热线: 4008-898-798

Applications

Western blotting

Predicted band size:39 kDa

Positive control:Hela cells and mouse kidney tissue

Recommended dilution: 200-1000

Gel: 12%SDS-PAGE

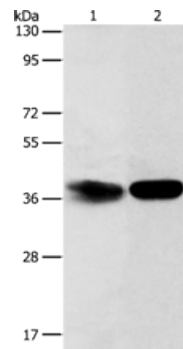
Lysate: 40 µg

Lane 1-2: Hela cells, mouse kidney tissue

Primary antibody: ml161318(ADPRHL2 Antibody) at dilution 1/500

Secondary antibody: Goat anti rabbit IgG at 1/8000 dilution

Exposure time: 2 minutes



ELISA

Recommended dilution:1000-2000

联系电话: 4008-898-798, 021-61725725

联系QQ: 2881505695, 2881505696

邮箱: mlbio_cn@yeah.net

网址: www.mlbio.cn