

Anti-ASF1A antibody

Cat. No.	ml161419
Package	25 µl/100 µl/200 µl
Storage	-20°C, pH7.4 PBS, 0.05% NaN ₃ , 40% Glycerol

Product overview

Description	Anti-ASF1A rabbit polyclonal antibody
Applications	ELISA, WB
Immunogen	Synthetic peptide of human ASF1A
Reactivity	Human, Mouse
Content	0.4 mg/ml
Host species	Rabbit
Ig class	Immunogen-specific rabbit IgG
Purification	Antigen affinity purification

Target information

Symbol	ASF1A
Full name	anti-silencing function 1A histone chaperone
Synonyms	CIA; CGI-98; HSPC146
Swissprot	Q9Y294

Target Background

This gene encodes a member of the H3/H4 family of histone chaperone proteins and is similar to the anti-silencing function-1 gene in yeast. The protein is a key component of a histone donor complex that functions in nucleosome assembly. It interacts with histones H3 and H4, and functions together with a chromatin assembly factor during DNA replication and repair.

订购热线: 4008-898-798

Applications

Western blotting

Predicted band size: 23 kDa

Positive control: HEPG2 and PC-3 cell lysates

Recommended dilution: 200-1000

Gel: 12% SDS-PAGE

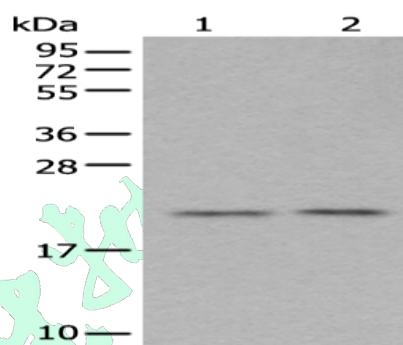
Lysate: 40 µg

Lane 1-2: HEPG2 and PC-3 cell lysates

Primary antibody: ml161419 (ASF1A Antibody) at dilution 1/200

Secondary antibody: Goat anti rabbit IgG at 1/8000 dilution

Exposure time: 2 MIN



ELISA

Recommended dilution: 2000-5000

联系电话: 4008-898-798, 021-61725725

联系QQ: 2881505695, 2881505696

邮箱: mlbio_cn@yeah.net

网址: www.mlbio.cn