

## Anti-GM2A antibody

<b>Cat. No.</b>	ml223862
<b>Package</b>	25 µl/100 µl/200 µl
<b>Storage</b>	-20°C, pH7.4 PBS, 0.05% NaN <sub>3</sub> , 40% Glycerol

### Product overview

<b>Description</b>	Anti-GM2A rabbit polyclonal antibody
<b>Applications</b>	ELISA, WB, IHC
<b>Immunogen</b>	Fusion protein of human GM2A
<b>Reactivity</b>	Human, Mouse
<b>Content</b>	0.7 mg/ml
<b>Host species</b>	Rabbit
<b>Ig class</b>	Immunogen-specific rabbit IgG
<b>Purification</b>	Antigen affinity purification

### Target information

<b>Symbol</b>	GM2A
<b>Full name</b>	GM2 ganglioside activator

**Synonyms** SAP-3; GM2-AP

**Swissprot** P17900

### **Target Background**

This gene encodes a small glycolipid transport protein which acts as a substrate specific co-factor for the lysosomal enzyme beta-hexosaminidase A. Beta-hexosaminidase A, together with GM2 ganglioside activator, catalyzes the degradation of the ganglioside GM2, and other molecules containing terminal N-acetyl hexosamines. Mutations in this gene result in GM2-gangliosidosis type AB or the AB variant of Tay-Sachs disease. Alternative splicing results in multiple transcript variants.

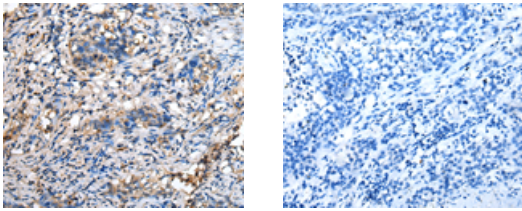
## Applications

### Immunohistochemistry

Predicted cell location: Cytoplasm

Positive control: Human lung cancer

Recommended dilution: 20-100



The image on the left is immunohistochemistry of paraffin-embedded Human lung cancer tissue using ml223862(GM2A Antibody) at dilution 1/25, on the right is treated with fusion protein. (Original magnification:  $\times 200$ )

### Western blotting

Predicted band size: 21 kDa

Positive control: Human 2-3 grade bladder transitional cell carcinoma tissue, Mouse kidney tissue, Hela cell, 293T cell, A375 cell

Recommended dilution: 200-1000

订购热线: 4008-898-798

Gel: 12%SDS-PAGE

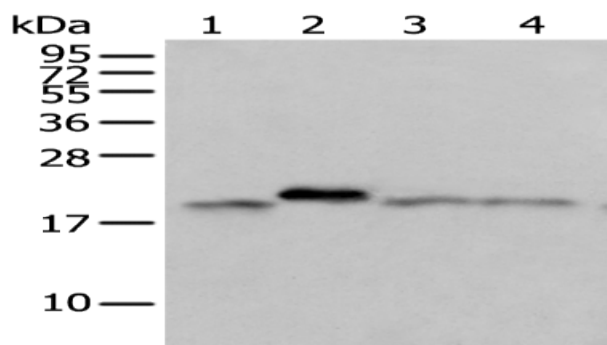
Lysate: 40 µg

Lane 1-5: Human 2-3 grade bladder transitional cell carcinoma tissue,  
Mouse kidney tissue, HeLa cell, 293T cell, A375 cell

Primary antibody: ml223862(GM2A Antibody) at dilution 1/250

Secondary antibody: Goat anti rabbit IgG at 1/8000 dilution

Exposure time: 2 seconds



## ELISA

Recommended dilution: 5000-10000

联系电话: 4008-898-798, 021-61725725

联系QQ: 2881505695, 2881505696

邮箱: [mlbio\\_cn@yeah.net](mailto:mlbio_cn@yeah.net)

网址: [www.mlbio.cn](http://www.mlbio.cn)