

Anti-CTNNAL1 antibody

Cat. No.	ml220350
Package	25 µl/100 µl/200 µl
Storage	-20°C, pH7.4 PBS, 0.05% NaN ₃ , 40% Glycerol

Product overview

Description	Anti-CTNNAL1 rabbit polyclonal antibody
Applications	ELISA, WB
Immunogen	Fusion protein of human CTNNAL1
Reactivity	Human, Mouse
Content	4 mg/ml
Host species	Rabbit
Ig class	Immunogen-specific rabbit IgG
Purification	Antigen affinity purification

Target information

Symbol	CTNNAL1
Full name	catenin alpha like 1
Synonyms	ACRP; CLLP; alpha-CATU
Swissprot	Q9UBT7

Target Background

CTNNAL1 (catenin (cadherin-associated protein), alpha-like 1), also known as CLLP or alpha-CATU, is a 734 amino acid cytoplasmic peripheral membrane protein belonging to the vinculin/alpha-catenin family. Expressed at high levels in adrenal gland and present at lower levels in neural tissues, CTNNAL1 may be involved in the regulation of Rho pathway signaling by providing a scaffold for the Lbc Rho guanine nucleotide exchange factor 1 (RhoGEF p115). It is suggested that CTNNAL1 is down-regulated in pancreatic carcinoma undergoing differentiation and apoptosis. Existing as three isoforms produced by alternative splicing events, CTNNAL1 may contribute to the wound repair and proliferation of human bronchial epithelial cells (HBEC).

订购热线: 4008-898-798

Applications

Western blotting

Predicted band size: 82 kDa

Positive control: A431 cell lysate

Recommended dilution: 200-1000

Gel: 6%SDS-PAGE

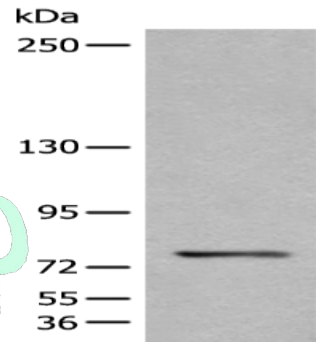
Lysate: 40 µg

Lane: A431 cell lysate

Primary antibody: ml220350(CTNNAL1 Antibody) at dilution 1/500

Secondary antibody: Goat anti rabbit IgG at 1/8000 dilution

Exposure time: 1 minute



ELISA

Recommended dilution: 5000-10000

联系电话: 4008-898-798, 021-61725725

联系QQ: 2881505695, 2881505696

邮箱: mlbio_cn@yeah.net

网址: www.mlbio.cn