

## Anti-HDHD2 antibody

|                 |   |
|-----------------|---|
| <b>Cat. No.</b> | ml223974  |
| <b>Package</b>  | 25 µl/100 µl/200 µl                                     |
| <b>Storage</b>  | -20°C, pH7.4 PBS, 0.05% NaN <sub>3</sub> , 40% Glycerol |

### Product overview

|                     |                                       |
|---------------------|---------------------------------------|
| <b>Description</b>  | Anti-HDHD2 rabbit polyclonal antibody |
| <b>Applications</b> | ELISA, WB, IHC                        |
| <b>Immunogen</b>    | Full length fusion protein            |
| <b>Reactivity</b>   | Human, Mouse, Rat                     |
| <b>Content</b>      | 0.6 mg/ml                             |
| <b>Host species</b> | Rabbit                                |
| <b>Ig class</b>     | Immunogen-specific rabbit IgG         |
| <b>Purification</b> | Antigen affinity purification         |

### Target information

|                  |  |
|------------------|--|
| <b>Symbol</b>    | HDHD2  |
| <b>Full name</b> | haloacid dehalogenase-like hydrolase domain containing 2 |

**Synonyms** HEL-S-301; 3110052N05Rik

**Swissprot** Q9HOR4

### **Target Background**

HDHD2 (haloacid dehalogenase-like hydrolase domain containing 2) is also known as DKFZp564D1378 and is a 259 amino acid protein that is expressed as two isoforms produced by alternative splicing. HDHD2 belongs to the HAD-like hydrolase superfamily, which contains a group of hydrolase enzymes

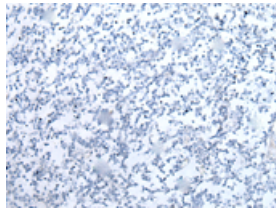
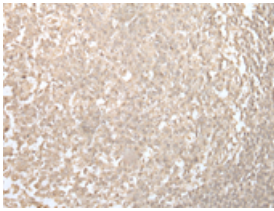
## Applications

### Immunohistochemistry

Predicted cell location: Cytoplasm and Nucleus

Positive control: Human tonsil

Recommended dilution: 25-100

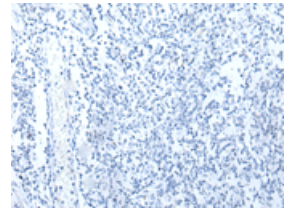
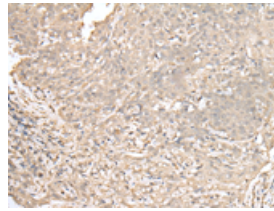


The image on the left is immunohistochemistry of paraffin-embedded Human tonsil tissue using ml223974(HDHD2 Antibody) at dilution 1/30, on the right is treated with fusion protein. (Original magnification:  $\times 200$ )

Predicted cell location: Cytoplasm and Nucleus

Positive control: Human cervical cancer

Recommended dilution: 25-100



The image on the left is immunohistochemistry of paraffin-embedded Human cervical cancer tissue using ml223974(HDHD2 Antibody) at dilution 1/30, on the right is treated with fusion protein. (Original magnification:  $\times 200$ )

### Western blotting

Predicted band size: 29 kDa

Positive control: HEPG2 cell lysate

Recommended dilution: 200-1000

订购热线: 4008-898-798

Gel: 12%SDS-PAGE

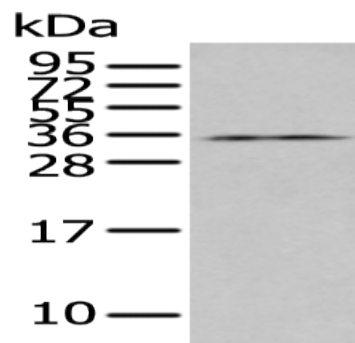
Lysate: 40  $\mu$ g

Lane: HEPG2 cell lysate

Primary antibody: ml223974(HDHD2 Antibody) at dilution 1/300

Secondary antibody: Goat anti rabbit IgG at 1/8000 dilution

Exposure time: 20 seconds



#### ELISA

Recommended dilution: 5000-10000

联系电话: 4008-898-798, 021-61725725

联系QQ: 2881505695, 2881505696

邮箱: [mlbio\\_cn@yeah.net](mailto:mlbio_cn@yeah.net)

网址: [www.mlbio.cn](http://www.mlbio.cn)