

Anti-CEBPE antibody

Cat. No.	ml220412
Package	25 µl/100 µl/200 µl
Storage	-20°C, pH7.4 PBS, 0.05% NaN ₃ , 40% Glycerol

Product overview

Description	Anti-CEBPE rabbit polyclonal antibody
Applications	ELISA, WB
Immunogen	Fusion protein of human CEBPE
Reactivity	Human, Mouse, Rat
Content	0.3 mg/ml
Host species	Rabbit
Ig class	Immunogen-specific rabbit IgG
Purification	Antigen affinity purification

Target information

Symbol	CEBPE
Full name	CCAAT/enhancer binding protein (C/EBP), epsilon
Synonyms	CRP1; C/EBP-epsilon
Swissprot	Q15744

Target Background

The protein encoded by this gene is a bZIP transcription factor which can bind as a homodimer to certain DNA regulatory regions. It can also form heterodimers with the related protein CEBP-delta. The encoded protein may be essential for terminal differentiation and functional maturation of committed granulocyte progenitor cells. Mutations in this gene have been associated with Specific Granule Deficiency, a rare congenital disorder. Multiple variants of this gene have been described, but the full-length nature of only one has been determined.

订购热线: 4008-898-798

Applications

Western blotting

Predicted band size: 31 kDa

Positive control: Mouse liver tissue

Recommended dilution: 200-1000

Gel: 10% SDS-PAGE

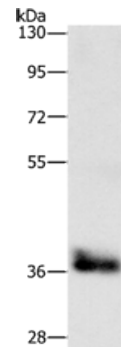
Lysate: 40 μ g

Lane: Mouse liver tissue

Primary antibody: ml220412 (CEBPE Antibody) at dilution 1/650

Secondary antibody: Goat anti rabbit IgG at 1/8000 dilution

Exposure time: 30 seconds



ELISA

Recommended dilution: 1000-2000

联系电话: 4008-898-798, 021-61725725

联系QQ: 2881505695, 2881505696

邮箱: mlbio_cn@yeah.net

网址: www.mlbio.cn