

Anti-CNTROB antibody

Cat. No.	ml222128
Package	25 µl/100 µl/200 µl
Storage	-20°C, pH7.4 PBS, 0.05% NaN ₃ , 40% Glycerol

Product overview

Description	Anti-CNTROB rabbit polyclonal antibody
Applications	ELISA, WB
Immunogen	Fusion protein of human CNTROB
Reactivity	Human, Mouse
Content	0.6 mg/ml
Host species	Rabbit
Ig class	Immunogen-specific rabbit IgG
Purification	Antigen affinity purification

Target information

Symbol	CNTROB
Full name	centrobin, centrosomal BRCA2 interacting protein
Synonyms	LIP8; PP1221
Swissprot	Q8N137

Target Background

This gene encodes a centrosomal protein that interacts with BRCA2, and is required for centriole duplication and cytokinesis. Alternatively spliced transcript variants encoding different isoforms have been described for this gene.

订购热线: 4008-898-798

Applications

Western blotting

Predicted band size:101 kDa

Positive control:Mouse kidney tissue

Recommended dilution: 200-1000

Gel: 6%SDS-PAGE

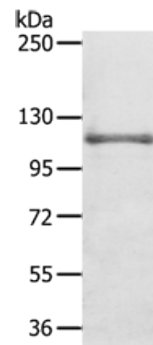
Lysate: 40 µg

Lane: Mouse kidney tissue

Primary antibody: ml222128(CNTROB Antibody) at dilution 1/250

Secondary antibody: Goat anti rabbit IgG at 1/8000 dilution

Exposure time: 40 seconds



ELISA

Recommended dilution:1000-2000

联系电话: 4008-898-798, 021-61725725

联系QQ: 2881505695, 2881505696

邮箱: mlbio_cn@yeah.net

网址: www.mlbio.cn