

Anti-PPAT antibody

Cat. No.	ml222426
Package	25 µl/100 µl/200 µl
Storage	-20°C, pH7.4 PBS, 0.05% NaN ₃ , 40% Glycerol

Product overview

Description	Anti-PPAT rabbit polyclonal antibody
Applications	ELISA, WB, IHC
Immunogen	Fusion protein of human PPAT
Reactivity	Human, Mouse, Rat
Content	0.5 mg/ml
Host species	Rabbit
Ig class	Immunogen-specific rabbit IgG
Purification	Antigen affinity purification

Target information

Symbol	PPAT
Full name	phosphoribosyl pyrophosphate amidotransferase

Synonyms GPAT; PRAT; ATASE

Swissprot Q06203

Target Background

The protein encoded by this gene is a member of the purine/pyrimidine phosphoribosyltransferase family. It is a regulatory allosteric enzyme that catalyzes the first step of de novo purine nucleotide biosynthetic pathway. This gene and PAICS/AIRC gene, a bifunctional enzyme catalyzing steps six and seven of this pathway, are located in close proximity on chromosome 4, and divergently transcribed from an intergenic region.

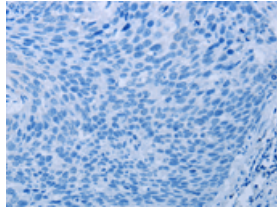
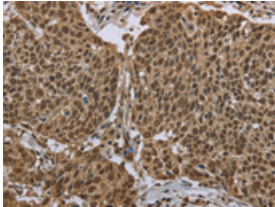
Applications

Immunohistochemistry

Predicted cell location: Cytoplasm and Nucleus

Positive control: Human cervical cancer

Recommended dilution: 100-300

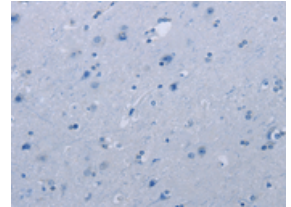
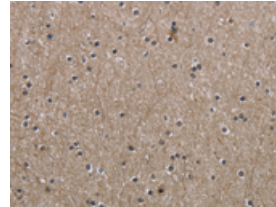


The image on the left is immunohistochemistry of paraffin-embedded Human cervical cancer tissue using ml222426(PPAT Antibody) at dilution 1/50, on the right is treated with fusion protein. (Original magnification: ×200)

Predicted cell location: Cytoplasm and Nucleus

Positive control: Human brain

Recommended dilution: 100-300



The image on the left is immunohistochemistry of paraffin-embedded Human brain tissue using ml222426(PPAT Antibody) at dilution 1/50, on the right is treated with fusion protein. (Original magnification: ×200)

Western blotting

Predicted band size: 57 kDa

Positive control: Hela, Raji, Jurkat, A549 and NIH/3T3 cells

Recommended dilution: 500-2000

订购热线: 4008-898-798

Gel: 10%SDS-PAGE

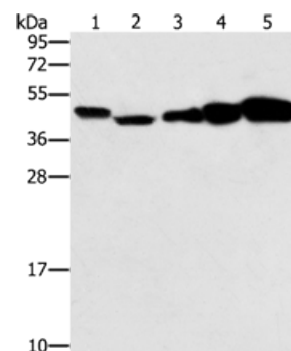
Lysate: 40 μ g

Lane 1-5: Hela cells, Raji cells, Jurkat cells, A549 cells, NIH/3T3 cells

Primary antibody: ml222426(PPAT Antibody) at dilution 1/250

Secondary antibody: Goat anti rabbit IgG at 1/8000 dilution

Exposure time: 20 seconds



ELISA

Recommended dilution: 2000-10000

联系电话: 4008-898-798, 021-61725725

联系QQ: 2881505695, 2881505696

邮箱: mlbio_cn@yeah.net

网址: www.mlbio.cn