

Anti-IFNL3 antibody

Cat. No.	ml222542
Package	25 µl/100 µl/200 µl
Storage	-20°C, pH7.4 PBS, 0.05% NaN ₃ , 40% Glycerol

Product overview

Description	Anti-IFNL3 rabbit polyclonal antibody
Applications	ELISA, WB
Immunogen	Fusion protein of human IFNL3
Reactivity	Human
Content	0.5 mg/ml
Host species	Rabbit
Ig class	Immunogen-specific rabbit IgG
Purification	Antigen affinity purification

Target information

Symbol	IFNL3
Full name	interferon, lambda 3
Synonyms	IL28B; IL28C; IL-28B
Swissprot	Q8IZI9

Target Background

This gene encodes a cytokine distantly related to type I interferons and the IL-10 family. This gene, interleukin 28A (IL28A), and interleukin 29 (IL29) are three closely related cytokine genes that form a cytokine gene cluster on a chromosomal region mapped to 19q13. Expression of the cytokines encoded by the three genes can be induced by viral infection.

订购热线: 4008-898-798

Applications

Western blotting

Predicted band size:22 kDa

Positive control:Human ovarian cancer

Recommended dilution: 200-1000

Gel: 12%SDS-PAGE

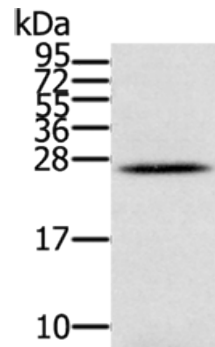
Lysate: 40 µg

Lane: Human ovarian cancer tissue

Primary antibody: ml222542(IFNL3 Antibody) at dilution 1/350

Secondary antibody: Goat anti rabbit IgG at 1/8000 dilution

Exposure time: 1 minute



ELISA

Recommended dilution:1000-2000

联系电话: 4008-898-798, 021-61725725

联系QQ: 2881505695, 2881505696

邮箱: mlbio_cn@yeah.net

网址: www.mlbio.cn