

Anti-FSTL1 antibody

Cat. No.	ml122387
Package	25 µl/100 µl/200 µl
Storage	-20°C, pH7.4 PBS, 0.05% NaN ₃ , 40% Glycerol

Product overview

Description	Anti-FSTL1 rabbit polyclonal antibody
Applications	ELISA, IHC
Immunogen	Fusion protein of human FSTL1
Reactivity	Human, Mouse, Rat
Content	0.5 mg/ml
Host species	Rabbit
Ig class	Immunogen-specific rabbit IgG
Purification	Antigen affinity purification

Target information

Symbol	FSTL1
Full name	follicle-stimulating-like 1
Synonyms	FRP; FSL1; MIR198
Swissprot	Q12841

Target Background

This gene encodes a protein with similarity to follistatin, an activin-binding protein. It contains an FS module, a follistatin-like sequence containing 10 conserved cysteine residues. This gene product is thought to be an autoantigen associated with rheumatoid arthritis.

订购热线: 4008-898-798

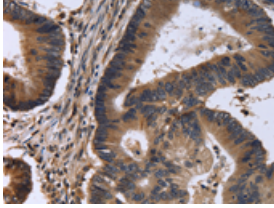
Applications

Immunohistochemistry

Predicted cell location: Cytoplasm

Positive control: Human colon cancer

Recommended dilution: 50-200

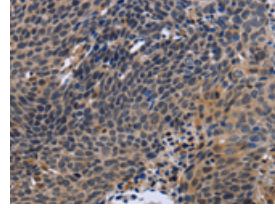


The image is immunohistochemistry of paraffin-embedded Human colon cancer tissue using ml122387(FSTL1 Antibody) at dilution 1/30. (Original magnification: ×200)

Predicted cell location: Cytoplasm

Positive control: Human cervical cancer

Recommended dilution: 50-200



The image is immunohistochemistry of paraffin-embedded Human cervical cancer tissue using ml122387(FSTL1 Antibody) at dilution 1/30. (Original magnification: ×200)

ELISA

Recommended dilution: 2000-5000

联系电话: 4008-898-798, 021-61725725

联系QQ: 2881505695, 2881505696

邮箱: mlbio_cn@yeah.net

网址: www.mlbio.cn