

Anti-RPS27L antibody

Cat. No.	ml225183
Package	25 µl/100 µl/200 µl
Storage	-20°C, pH7.4 PBS, 0.05% NaN ₃ , 40% Glycerol

Product overview

Description	Anti-RPS27L rabbit polyclonal antibody
Applications	ELISA, WB, IHC
Immunogen	Fusion protein of human RPS27L
Reactivity	Human, Mouse, Rat
Content	0.96 mg/ml
Host species	Rabbit
Ig class	Immunogen-specific rabbit IgG
Purification	Antigen affinity purification

Target information

Symbol	RPS27L
Full name	ribosomal protein S27 like

Synonyms

Swissprot Q71UM5

Target Background

This gene encodes a protein sharing 96% amino acid similarity with ribosomal protein S27, which suggests the encoded protein may be a component of the 40S ribosomal subunit.

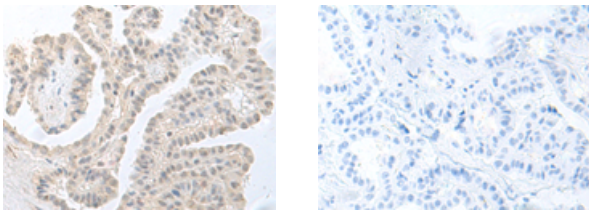
Applications

Immunohistochemistry

Predicted cell location: Nucleus

Positive control: Human thyroid cancer

Recommended dilution: 40-200



The image on the left is immunohistochemistry of paraffin-embedded Human thyroid cancer tissue using ml225183(RPS27L Antibody) at dilution 1/55, on the right is treated with fusion protein. (Original magnification: ×200)

Western blotting

Predicted band size: 9 kDa

Positive control: Mouse adrenal gland tissue, Rat lung tissue, 231 cell lysates

Recommended dilution: 500-2000

订购热线: 4008-898-798

Gel: 12%SDS-PAGE

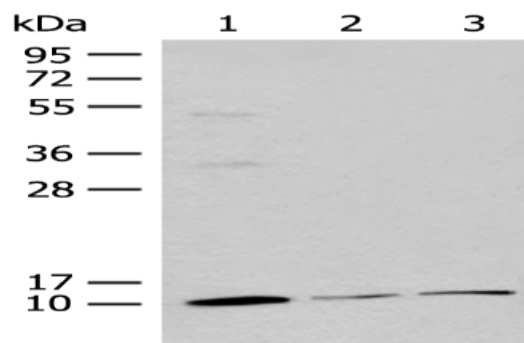
Lysate: 40 μ g

Lane 1-3: Mouse adrenal gland tissue, Rat lung tissue, 231 cell lysates

Primary antibody: ml225183(RPS27L Antibody) at dilution 1/400

Secondary antibody: Goat anti rabbit IgG at 1/8000 dilution

Exposure time: 10 seconds



ELISA

Recommended dilution: 5000-10000

联系电话: 4008-898-798, 021-61725725

联系QQ: 2881505695, 2881505696

邮箱: mlbio_cn@yeah.net

网址: www.mlbio.cn