

## Anti-AD7C-NTP antibody

<b>Cat. No.</b>	ml260093
<b>Package</b>	25 µl/100 µl/200 µl
<b>Storage</b>	-20°C, pH7.4 PBS, 0.05% NaN <sub>3</sub> , 40% Glycerol

### Product overview

<b>Description</b>	Anti-AD7C-NTP rabbit polyclonal antibody
<b>Applications</b>	ELISA, WB, IHC
<b>Immunogen</b>	Synthetic peptide of human AD7C-NTP
<b>Reactivity</b>	Human
<b>Content</b>	0.3 mg/ml
<b>Host species</b>	Rabbit
<b>Ig class</b>	Immunogen-specific rabbit IgG
<b>Purification</b>	Antigen affinity purification

### Target information

<b>Symbol</b>	AD7C-NTP
<b>Full name</b>	Neuronal thread protein AD7c-NTP

**Synonyms**

AD7CNTP

**Swissprot**

**Target Background**

The predicted AD7CNTP protein contains 375 amino acids and has a calculate molecular mass of about 42 kD. It is rich in serine and proline residues, has a 15-amino acid hydrophobic leader sequence, and has 7 putative membrane-spanning regions. AD7CNTP has several phosphorylation sites, a myristoylation site, and 2 serine/threonine kinase protein domains. Northern blot analysis detected 1.4- and 0.9-kb transcripts only in adult frontal and temporal lobe. In vitro studies demonstrated that overexpression of AD7CNTP in transfected neuronal cells promoted neuritic sprouting and cell death, the 2 principal neuroanatomic lesions correlated with dementia in AD.

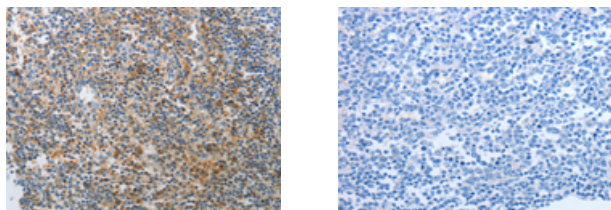
## Applications

### Immunohistochemistry

Predicted cell location: Cytoplasm

Positive control: Human tonsil

Recommended dilution: 25-100



The image on the left is immunohistochemistry of paraffin-embedded Human tonsil tissue using ml260093(AD7C-NTP Antibody) at dilution 1/25, on the right is treated with synthetic peptide. (Original magnification:  $\times 200$ )

### Western blotting

Predicted band size: 41 kDa

Positive control: Human fetal brain tissue

Recommended dilution: 200-1000

Gel: 10%SDS-PAGE

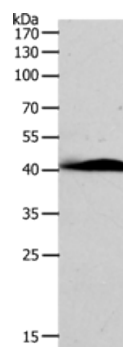
Lysate: 60  $\mu$ g

Lane: Human fetal brain tissue

Primary antibody: ml260093(AD7C-NTP Antibody) at dilution 1/500

Secondary antibody: Goat anti rabbit IgG at 1/8000 dilution

Exposure time: 1 minute



## ELISA

Recommended dilution: 1000-5000

联系电话: 4008-898-798, 021-61725725

联系QQ: 2881505695, 2881505696

邮箱: [mlbio\\_cn@yeah.net](mailto:mlbio_cn@yeah.net)

网址: [www.mlbio.cn](http://www.mlbio.cn)