

Anti-PRAME antibody

| | |
|-----------------|---|
| Cat. No. | ml122915 |
| Package | 25 µl/100 µl/200 µl |
| Storage | -20°C, pH7.4 PBS, 0.05% NaN ₃ , 40% Glycerol |

Product overview

| | |
|---------------------|---------------------------------------|
| Description | Anti-PRAME rabbit polyclonal antibody |
| Applications | ELISA, IHC |
| Immunogen | Fusion protein of human PRAME |
| Reactivity | Human |
| Content | 1.1 mg/ml |
| Host species | Rabbit |
| Ig class | Immunogen-specific rabbit IgG |
| Purification | Antigen affinity purification |

Target information

| | |
|------------------|--|
| Symbol | PRAME |
| Full name | preferentially expressed antigen in melanoma |
| Synonyms | MAPE; OIP4; CT130; OIP-4 |
| Swissprot | P78395 |

Target Background

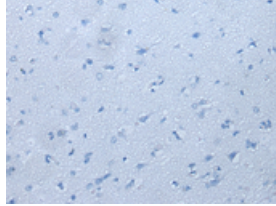
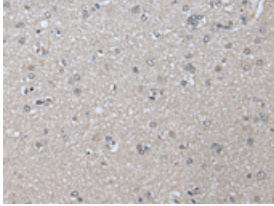
This gene encodes an antigen that is preferentially expressed in human melanomas and that is recognized by cytolytic T lymphocytes. It is not expressed in normal tissues, except testis. The encoded protein acts as a repressor of retinoic acid receptor, and likely confers a growth advantage to cancer cells via this function. Alternative splicing results in multiple transcript variants.

订购热线: 4008-898-798

Applications

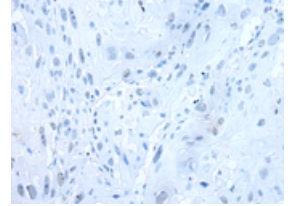
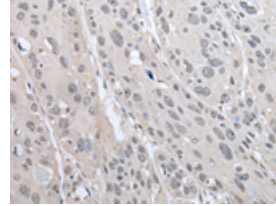
Immunohistochemistry

Predicted cell location: Cytoplasm or Nucleus
Positive control: Human brain
Recommended dilution: 40-250



The image on the left is immunohistochemistry of paraffin-embedded Human brain tissue using ml122915(PRAME Antibody) at dilution 1/65, on the right is treated with fusion protein. (Original magnification: ×200)

Predicted cell location: Cytoplasm or Nucleus
Positive control: Human esophagus cancer
Recommended dilution: 40-250



The image on the left is immunohistochemistry of paraffin-embedded Human esophagus cancer tissue using ml122915(PRAME Antibody) at dilution 1/65, on the right is treated with fusion protein. (Original magnification: ×200)

ELISA

Recommended dilution: 5000-10000

联系电话: 4008-898-798, 021-61725725

联系QQ: 2881505695, 2881505696

邮箱: mlbio_cn@yeah.net

网址: www.mlbio.cn