

Anti-DDX39B antibody

Cat. No.	ml262439
Package	25 µl/100 µl/200 µl
Storage	-20°C, pH7.4 PBS, 0.05% NaN ₃ , 40% Glycerol

Product overview

Description	Anti-DDX39B rabbit polyclonal antibody
Applications	ELISA, WB, IHC
Immunogen	Synthetic peptide of human DDX39B
Reactivity	Human, Mouse, Rat
Content	0.4 mg/ml
Host species	Rabbit
Ig class	Immunogen-specific rabbit IgG
Purification	Antigen affinity purification

Target information

Symbol	DDX39B
Full name	DEAD (Asp-Glu-Ala-Asp) box polypeptide 39B

Synonyms BAT1; UAP56; D6S81E

Swissprot Q13838

Target Background

This gene encodes a member of the DEAD box family of RNA-dependent ATPases that mediate ATP hydrolysis during pre-mRNA splicing. The encoded protein is an essential splicing factor required for association of U2 small nuclear ribonucleoprotein with pre-mRNA, and it also plays an important role in mRNA export from the nucleus to the cytoplasm. This gene belongs to a cluster of genes localized in the vicinity of the genes encoding tumor necrosis factor alpha and tumor necrosis factor beta.

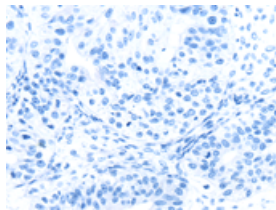
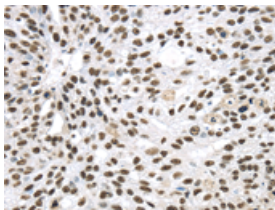
Applications

Immunohistochemistry

Predicted cell location: Nucleus

Positive control: Human breast cancer

Recommended dilution: 30-150

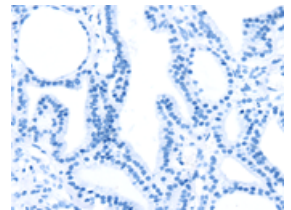
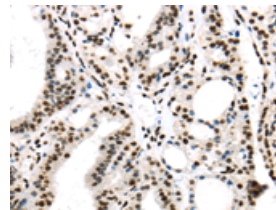


The image on the left is immunohistochemistry of paraffin-embedded Human breast cancer tissue using m1262439(DDX39B Antibody) at dilution 1/40, on the right is treated with synthetic peptide. (Original magnification: $\times 200$)

Predicted cell location: Nucleus

Positive control: Human thyroid cancer

Recommended dilution: 30-150



The image on the left is immunohistochemistry of paraffin-embedded Human thyroid cancer tissue using m1262439(DDX39B Antibody) at dilution 1/40, on the right is treated with synthetic peptide. (Original magnification: $\times 200$)

Western blotting

Predicted band size: 49 kDa

Positive control: A431, SKOV3, 231, Jurkat, HepG2 and Hela cells

Recommended dilution: 500-2000

订购热线: 4008-898-798

Gel: 8%SDS-PAGE

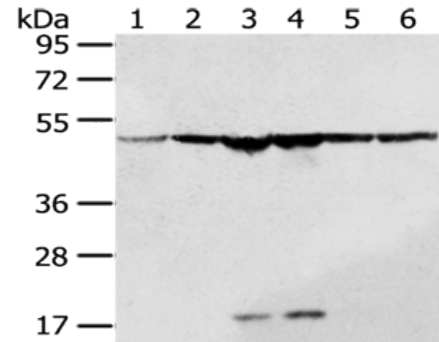
Lysate: 40 μ g

Lane 1-6: A431 cells, SKOV3 cells, 231 cells, Jurkat cells, HepG2 cells, Hela cells

Primary antibody: ml262439(DDX39B Antibody) at dilution 1/200

Secondary antibody: Goat anti rabbit IgG at 1/8000 dilution

Exposure time: 1 second



ELISA

Recommended dilution: 2000-5000

联系电话: 4008-898-798, 021-61725725

联系QQ: 2881505695, 2881505696

邮箱: mlbio_cn@yeah.net

网址: www.mlbio.cn