

## Anti-CUTA antibody

<b>Cat. No.</b>	ml124691
<b>Package</b>	25 µl/100 µl/200 µl
<b>Storage</b>	-20°C, pH7.4 PBS, 0.05% NaN <sub>3</sub> , 40% Glycerol

### Product overview

<b>Description</b>	Anti-CUTA rabbit polyclonal antibody
<b>Applications</b>	ELISA, IHC
<b>Immunogen</b>	Fusion protein of human CUTA
<b>Reactivity</b>	Human
<b>Content</b>	1.2 mg/ml
<b>Host species</b>	Rabbit
<b>Ig class</b>	Immunogen-specific rabbit IgG
<b>Purification</b>	Antigen affinity purification

### Target information

<b>Symbol</b>	CUTA
<b>Full name</b>	cutA divalent cation tolerance homolog
<b>Synonyms</b>	ACHAP; C6orf82
<b>Swissprot</b>	O60888

### Target Background

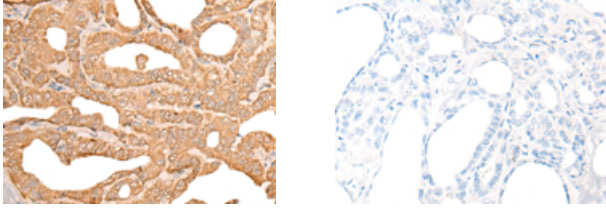
CUTA, also known as ACHAP (acetylcholinesterase-associated protein), is the 179 amino acid mammalian homolog of the cutA E. coli protein and is ubiquitously expressed, particularly in brain tissue. Existing as multiple alternatively spliced isoforms, CUTA functions as a homotrimer that is thought to act as a component of an acetylcholinesterase (AChE)-attached complex, suggesting an involvement in AChE regulation. The gene encoding CUTA maps to human chromosome 6, which contains 170 million base pairs and comprises nearly 6% of the human genome. Deletion of a portion of the q arm of chromosome 6 is associated with early onset intestinal cancer, suggesting the presence of a cancer susceptibility locus. Additionally, Porphyria cutanea tarda, Parkinson's disease, Stickler syndrome and a susceptibility to bipolar disorder are all associated with genes that map to chromosome 6.

订购热线: 4008-898-798

### Applications

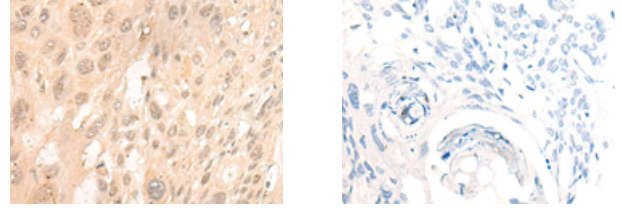
#### Immunohistochemistry

Predicted cell location: Cytoplasm and Nucleus  
Positive control: Human thyroid cancer  
Recommended dilution: 40-200



The image on the left is immunohistochemistry of paraffin-embedded Human thyroid cancer tissue using ml124691(CUTA Antibody) at dilution 1/45, on the right is treated with fusion protein. (Original magnification:  $\times 200$ )

Predicted cell location: Cytoplasm and Nucleus  
Positive control: Human esophagus cancer  
Recommended dilution: 40-200



The image on the left is immunohistochemistry of paraffin-embedded Human esophagus cancer tissue using ml124691(CUTA Antibody) at dilution 1/45, on the right is treated with fusion protein. (Original magnification:  $\times 200$ )

#### ELISA

Recommended dilution: 5000-10000

联系电话: 4008-898-798, 021-61725725

联系QQ: 2881505695, 2881505696

邮箱: [mlbio\\_cn@yeah.net](mailto:mlbio_cn@yeah.net)

网址: [www.mlbio.cn](http://www.mlbio.cn)