

Anti-PISD antibody

Cat. No.	ml124903
Package	25 µl/100 µl/200 µl
Storage	-20°C, pH7.4 PBS, 0.05% NaN ₃ , 40% Glycerol

Product overview

Description	Anti-PISD rabbit polyclonal antibody
Applications	ELISA, IHC
Immunogen	Fusion protein of human PISD
Reactivity	Human, Mouse, Rat
Content	1.38 mg/ml
Host species	Rabbit
Ig class	Immunogen-specific rabbit IgG
Purification	Antigen affinity purification

Target information

Symbol	PISD
Full name	phosphatidylserine decarboxylase
Synonyms	PSD; PSDC; PSSC; DJ858B16; dJ858B16.2
Swissprot	Q9UG56

Target Background

The protein encoded by this gene catalyzes the conversion of phosphatidylserine to phosphatidylethanolamine in the inner mitochondrial membrane. The encoded protein is active in phospholipid metabolism and interorganelle trafficking of phosphatidylserine.

订购热线: 4008-898-798

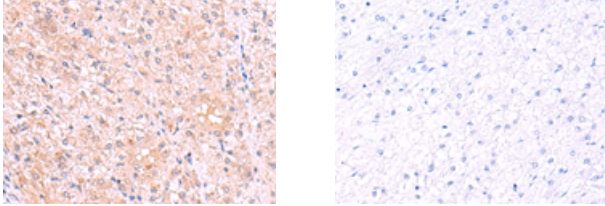
Applications

Immunohistochemistry

Predicted cell location: Cytoplasm

Positive control: Human liver cancer

Recommended dilution: 50-300



The image on the left is immunohistochemistry of paraffin-embedded Human liver cancer tissue using ml124903(PISD Antibody) at dilution 1/80, on the right is treated with fusion protein. (Original magnification: $\times 200$)

ELISA

Recommended dilution: 5000-10000

联系电话: 4008-898-798, 021-61725725

联系QQ: 2881505695, 2881505696

邮箱: mlbio_cn@yeah.net

网址: www.mlbio.cn