

Anti-SERPINB7 antibody

Cat. No.	ml263070
Package	25 µl/100 µl/200 µl
Storage	-20°C, pH7.4 PBS, 0.05% NaN ₃ , 40% Glycerol

Product overview

Description	Anti-SERPINB7 rabbit polyclonal antibody
Applications	ELISA, WB
Immunogen	Synthetic peptide of human SERPINB7
Reactivity	Human
Content	0.9 mg/ml
Host species	Rabbit
Ig class	Immunogen-specific rabbit IgG
Purification	Antigen affinity purification

Target information

Symbol	SERPINB7
Full name	serpin peptidase inhibitor, clade B (ovalbumin), member 7
Synonyms	PPKN; TP55; MEGSIN
Swissprot	O75635

Target Background

This gene encodes a member of a family of proteins which function as protease inhibitors. Expression of this gene is upregulated in IgA nephropathy and mutations have been found to cause palmoplantar keratoderma, Nagashima type. Alternative splicing results in multiple transcript variants.

订购热线: 4008-898-798

Applications

Western blotting

Predicted band size:43 kDa

Positive control:HL60 cell lysate

Recommended dilution: 200-1000

Gel: 8%SDS-PAGE

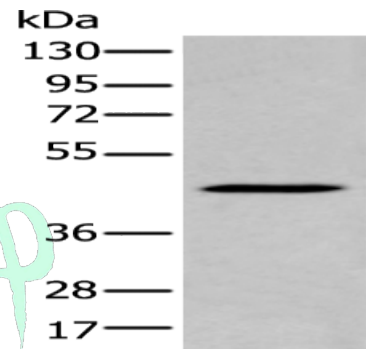
Lysate: 40 µg

Lane: HL60 cell lysate

Primary antibody: ml263070(SERPINB7 Antibody) at dilution 1/200

Secondary antibody: Goat anti rabbit IgG at 1/8000 dilution

Exposure time: 30 seconds



ELISA

Recommended dilution:5000-10000

联系电话: 4008-898-798, 021-61725725

联系QQ: 2881505695, 2881505696

邮箱: mlbio_cn@yeah.net

网址: www.mlbio.cn